

TECHNICAL MANUAL

**GENERAL SUPPORT MAINTENANCE
REPAIR PARTS AND SPECIAL TOOLS LIST
(INCLUDING DEPOT MAINTENANCE REPAIR PARTS
AND SPECIAL TOOLS)**

FOR

**CONVERTER, DIRECT CURRENT CV-3734/T
(NSN 5805-01-130-1499)**

Technical Manual }
 No. 11-6130-429-40P }

HEADQUARTERS
 DEPARTMENT OF THE ARMY
 Washington, DC, 2 JULY 1984

**GENERAL SUPPORT MAINTENANCE
 REPAIR PARTS AND SPECIAL TOOLS LIST
 (INCLUDING DEPOT MAINTENANCE REPAIR PARTS AND SPECIAL TOOLS)
 FOR
 CONVERTER, DIRECT CURRENT CY-3734/T
 (NSN 5805-01-130-1499)
 Current as of 30 April 1984**

REPORTING ERRORS AND RECOMMENDING IMPROVEMENTS

You can help improve this manual. If you find any mistakes or if you know of a way to improve the procedures, please let us know. Mail your letter, DA Form 2028 (Recommended Changes to Publications and Blank Forms), or DA Form 2028-2 located in the back of this manual direct to: Commander, US Army Communications-Electronics Command, and Fort Monmouth, ATTN: DRSEL-ME-MP, Fort Monmouth, NJ 07703.

In either case, a reply will be furnished direct to you.

Table of Contents

		Page	Illus Figure
Section	I. Introduction	1	
	II. Repair Parts List	5	
Group	00 Converter, Direct Current CV-3735/T.	5	1
	01 Baseplate Assembly	9	2
	02 Printed Wiring Board (A1).....	15	3
	03 Front Panel Assembly	19	4
	04 Rear Panel, Assembly	21	5
	05 Heatsink Assembly.	25	6
	06 Printing Wiring Board(A1).....	29	7
Section	III. Special Tools List		
Group	31 Special Tools	31	8
Section	IV. National Stock Number and Part Number Index	32	

SECTION I

INTRODUCTION

1. Scope

This manual lists spares and repair parts; special tools; special test, measurement, and diagnostic equipment (TMDE), and other special support equipment required for performance of general support maintenance of the CV-3735/T. It authorizes the requisitioning and issue of spares and repair parts as indicated by the source and maintenance codes.

2. General

This Repair Parts and Special Tools List is divided into the following sections:

a. Section II. Repair Parts List. A list of spares and repair parts authorized for use in the performance of maintenance. The list also includes parts which must be removed for replacement of the authorized parts. Parts lists are composed of functional groups in numeric sequence, with the parts in each group listed in figure and item number sequence.

b. Section III. Special Tools List. A list of special tools, special TMDE, and other special support equipment authorized for the performance of maintenance.

c. Section IV. National Stock Number and Part Number Index. A list, in National item identification number (NIIN) sequence, of all National stock numbers (NSN) appearing in the listings, followed by a list, in alphameric sequence, of all part numbers appearing in the listings. National stock numbers and part numbers are cross-referenced to each illustration figure and item number appearance.

3. Explanation of Columns

a. Illustration. This column is divided as follows:

(1) *Figure number.* Indicates the figure number of the illustration of which the item is shown.

(2) *Item number.* The number used to identify item called out in the illustration.

b. Source, Maintenance, and Recoverability (SMR) Codes.

(1) *Source code.* Source codes indicate the manner of acquiring support items for maintenance, repair, or overhaul of end items, Source codes are entered in the first and second positions of the Uniform SMR Code format as follows:

<i>Code</i>	<i>Definition</i>
PA	Item procured and stocked for anticipated or known usage.
PB	Item procured and stocked for insurance purpose because essentiality dictates that a minimum quantity be available in the supply system.
PC	Item procured and stocked and which otherwise would be coded PA except that it is

deteriorative in nature.

- PD — Support item, excluding support equipment, procured for initial issue or outfitting and stocked only for subsequent or additional initial issues or out fittings. Not subject to automatic replenishment.
- PE — Support equipment procured and stocked for initial issue or outfitting to specified maintenance repair activities.
- PF — Support equipment which will not be stocked but which will be centrally procured on demand.
- PG — Item procured and stocked to provide for sustained support for the life of the equipment. It is applied to an item peculiar to the equipment which, because of probable discontinuance or shutdown of production facilities, would prove uneconomical to reproduce at a later time.
- KD — An item of a depot overhaul/repair kit and not purchased separately. Depot kit defined as a kit that provides items required at the time of overhaul or repair.
- KF — An item of a maintenance kit and not purchased separately. Maintenance kit defined as a kit that provides an item that can be replaced at organizational or intermediate levels of maintenance.
- KB — Item included in both a depot overhaul/repair kit and a maintenance kit.
- MO — Item to be manufactured or fabricated at organizational level.
- MF — Item to be manufactured or fabricated at the direct support maintenance level.
- MH — Item to be manufactured or fabricated at the general support maintenance level.
- MD — Item to be manufactured or fabricated at the depot maintenance level.
- AO — Item to be assembled at organizational level.
- AF — Item to be assembled at direct support maintenance level.
- AH — Item to be assembled at general support maintenance level.
- AD — Item to be assembled at depot maintenance level.
- XA — Item is not procured or stocked because the requirements for the item will result in the replacement of the next higher assembly.
- XB — Item is not procured or stocked, If not available through salvage, requisition.
- XC — Installation drawing, diagram, instruction sheet, field service drawing, that is identified by manufacturer's part number.
- XD — A support item that is not stocked. When re-

Code *Definition*

quired, item will be procured through normal supply channels.

Note

Cannibalization or salvage may be used as a source of supply for any items source coded above except those coded XA and aircraft support items as restricted by AR 750-1.

(2) *Maintenance code.* Maintenance codes are assigned to indicate the levels of maintenance authorized to USE and REPAIR support items. The maintenance codes are entered in the third and fourth positions of the Uniform SMR Code format as follows:

(a) The maintenance code entered in the [bird position will indicate the lowest maintenance level authorized to remove, replace, and use the support item. The maintenance code entered in the third position will indicate one of the following levels of maintenance:

<i>Code</i>	<i>Application/Explanation</i>
C	— Crew or operator maintenance performed within organizational maintenance.
O	— Support item is removed, replaced, used at the organizational level.
F	— Support item is removed, replaced, used at the direct support level.
H	— Support item is removed, replaced, used at the general support level,
D	— Support items that are removed, replaced, used at depot, mobile depot, specialized repair activity only.

(b) The maintenance code entered in the fourth position indicates whether the item is to be repaired and identifies the lowest maintenance level with the capability to perform complete repair (i. e., all authorized maintenance functions). This position will contain one of the following maintenance codes:

<i>Code</i>	<i>Application/Explanation</i>
O	— The lowest maintenance level capable of complete repair of the support item is the organizational level.
F	— The lowest maintenance level capable of complete repair of the support item is the direct support level.
H	— The lowest maintenance level capable of complete repair of the support item is the general support level.
D	— The lowest maintenance level capable of complete repair of the support item is the depot level.
L	— Repair restricted to designated specialized repair activity.
Z	— Nonreparable. No repair is authorized,

B — No repair is authorized. The item may be reconditioned by adjusting, lubricating, etc., at the user level. No parts or special tools are procured for the maintenance of this item.

(3) *Recoverability code.* Recoverability codes are assigned to support items to indicate the disposition action on unserviceable items. The recoverability code is entered in the fifth position of the Uniform SMR Code format as follows:

Recoverability

<i>codes</i>	<i>Definition</i>
Z	— Nonreparable item. When unserviceable, condemn and dispose at the level indicated in position 3.
O	— Repairable item. When uneconomically repairable, condemn and dispose at organizational level.
F	— Repairable item. When uneconomically repairable, condemn and dispose at the direct support level.
H	— Repairable item. When uneconomically repairable, condemn and dispose at the general support level.
D	— Repairable item. When beyond lower level repair capability, return to depot. Condemnation and disposal not authorized below depot level.
L	— Repairable item, Repair, condemnation, and disposal not authorized below depot/specialized repair activity level.
A	— Item requires special handling or condemnation procedures because of specific reasons (i.e., precious metal content, high dollar value, critical material or hazardous material). Refer to appropriate manuals/directives for specific instructions.

c. National Stock Number. Indicates the National stock number assigned to the item and will be used for requisitioning purposes.

d. Federal Supply Code for Manufacturer (FSCM). The FSCM is a 5-digit numeric code listed in SB 708-41/42 which is used to identify the manufacturer, distributor, or Government agency, etc.

e. Part Number. Indicates the primary number used by the manufacturer (individual, company, firm, corporation, or Government activity), which controls the design and characteristics of the item by means of its engineering drawings, specifications, standards, and inspection requirements to identify an item or range of items.

Note

When a stock numbered item is requisitioned, the repair part received may have a different part number than the part being replaced.

f. Description. Indicates the Federal item name and, if required, a minimum description to identify the item. In the Special Tools List, The initial basis of issue (BOI) appears as the last line in the entry for each special tool, special TMDE, and other special support equipment. When density of equipments supported exceeds density spread indicates in the basis of issue, the total authorization is increased accordingly.

g. Unit of Measure (U/M). Indicates the standard of the basic quantity of the listed item as used in performing the actual maintenance function. This measure is expressed by a two-character alphabetical abbreviation (e.g., ea, in, pr, etc). When the unit of measure differs from the unit of issue, the lowest unit of issue that will satisfy the required units of measure will be requisitioned.

h. Quantity Incorporated in Unit. Indicates the quantity of the item used in the breakout shown on the illustration figure, which is prepared for a functional group, subfunctional group, or an assembly.

4. Special Information

a. The following publications pertain to the CV-3734/T and its components:

TM 11-6130-429-12, Converter, Direct CV-3734/T.
 TM 11-6130-429-20P, Converter, Direct Current CV-3734/T.
 TM 11-6130-429-40, Converter, Direct Current CV-3734/T.

b. National stock numbers (NSN's) that are missing from P source coded items have been applied for and will be added to this TM by future change/revision when they are entered in the Army Master Data File (AMDF). Until

the NSN's are established and published, submit exception requisitions to: Commander, US Army Communications-Electronics Command and Fort Monmouth, ATTN: DRSEL-MM, Fort Monmouth, NJ 07703 for the part required to support your equipment.

5. How to Locate Repair Parts

a. When National stock number or part number is unknown.

(1) *First.* Using the table of contents, determine the functional group within which the item belongs. This is necessary since illustrations are prepared for functional groups and listings are divided into the same groups.

(2) *Second.* Find the illustration covering the functional group to which the item belongs.

(3) *Third.* Identify the item on the illustration and note the illustration figure and item number of the item.

(4) *Fourth.* Using the Repair Parts Listing, find the figure and item number noted on the illustration.

b. When National stock number or part number is known.

(1) *First.* Using the Index of National Stock Numbers and Part Numbers, find the pertinent National stock number or part number. This index is in NIIN sequence followed by a list of part numbers in alphabetic sequence, cross-referenced to the illustration figure number and item number,

(2) *Second.* After finding the figure and item number, locate the figure and item number in the repair parts list.

6. Abbreviations

Not applicable.

(Next printed page is 4.1.)

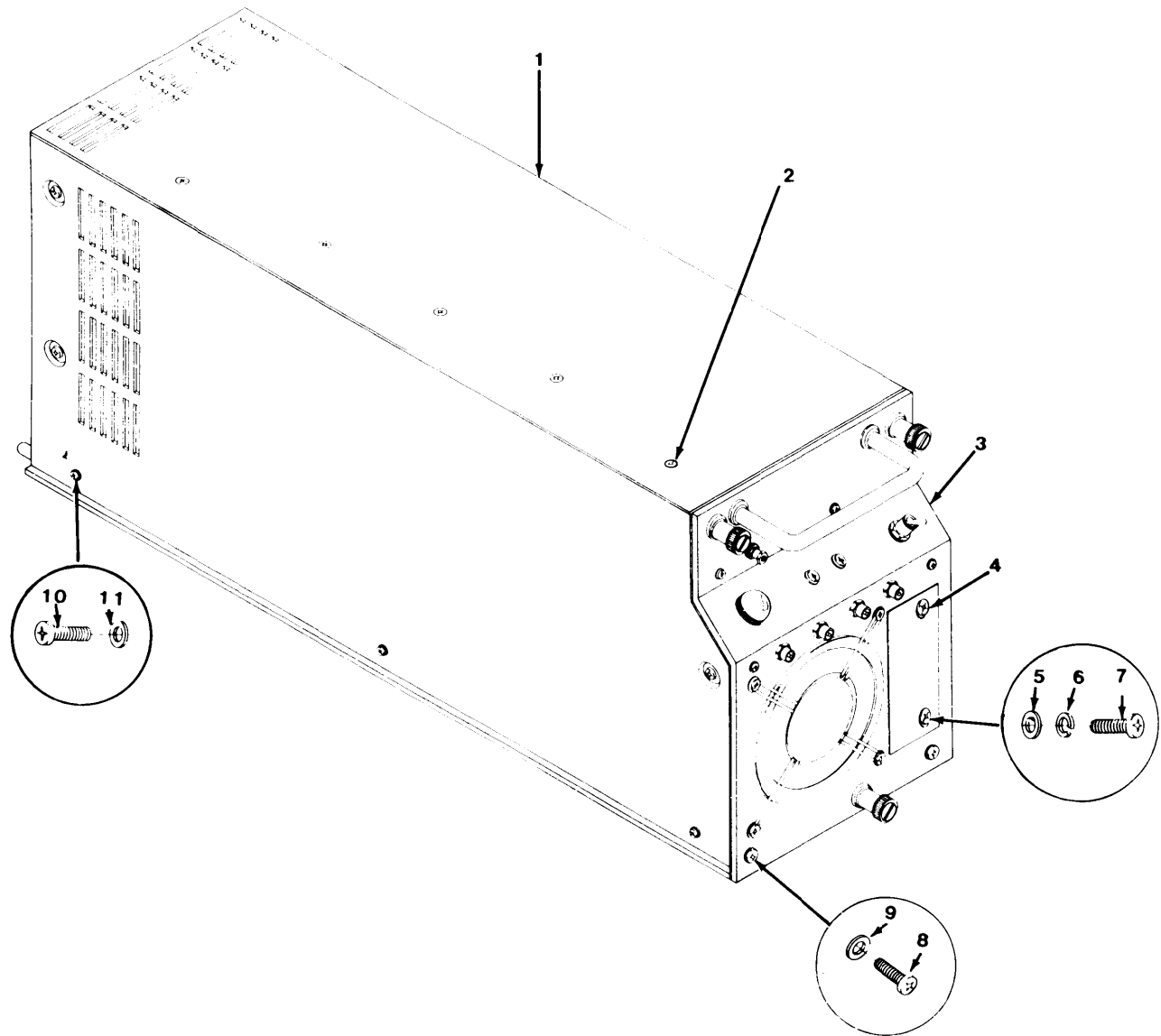
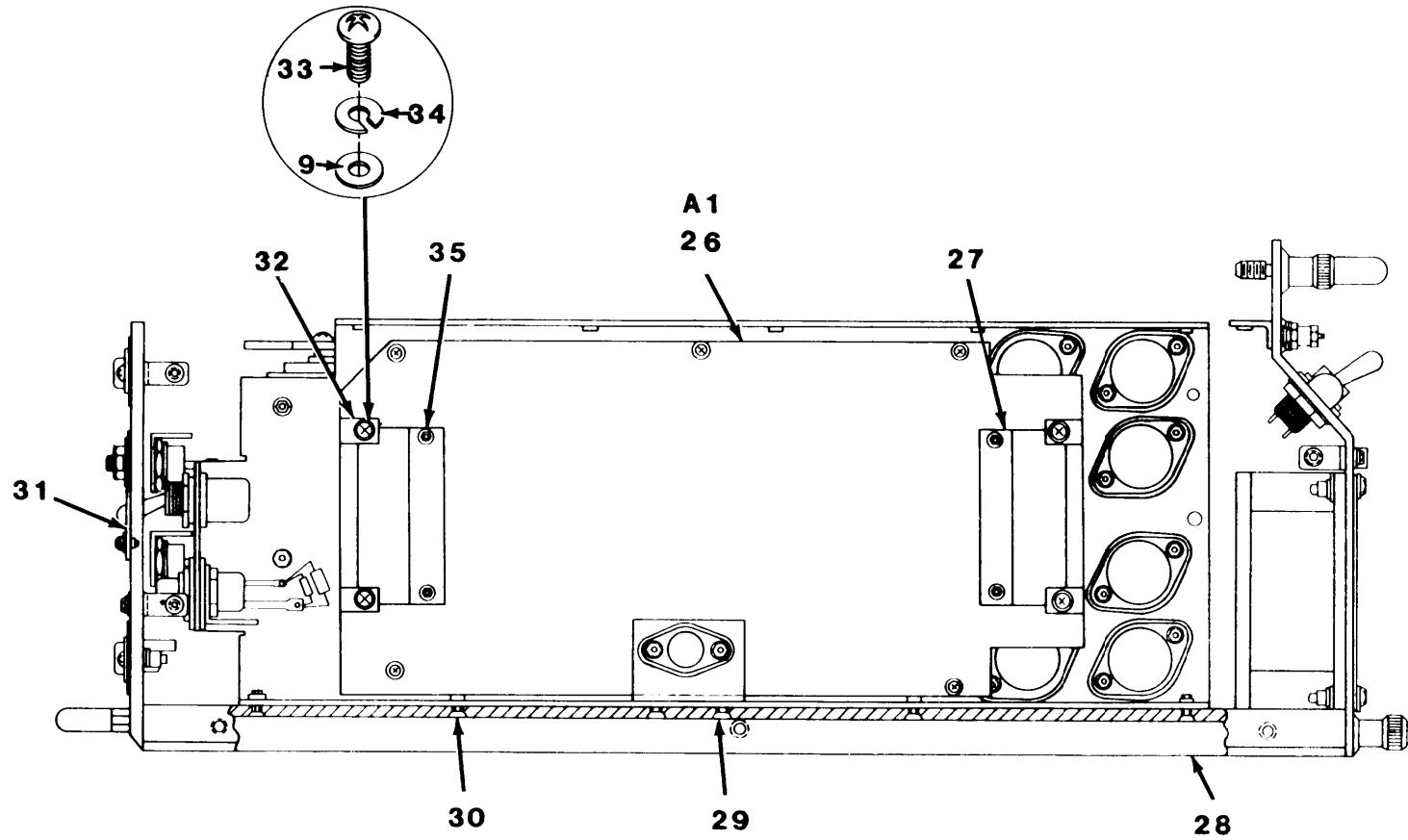


Figure 1. Converter, Direct Current CV-3734/T (Sheet 1 of 4).

EL9AY001



LEFT SIDE VIEW,
COVER REMOVED

Figure 1. Converter, Direct Current CV-3734/T (Sheet 3 of 4).

EL9AY003

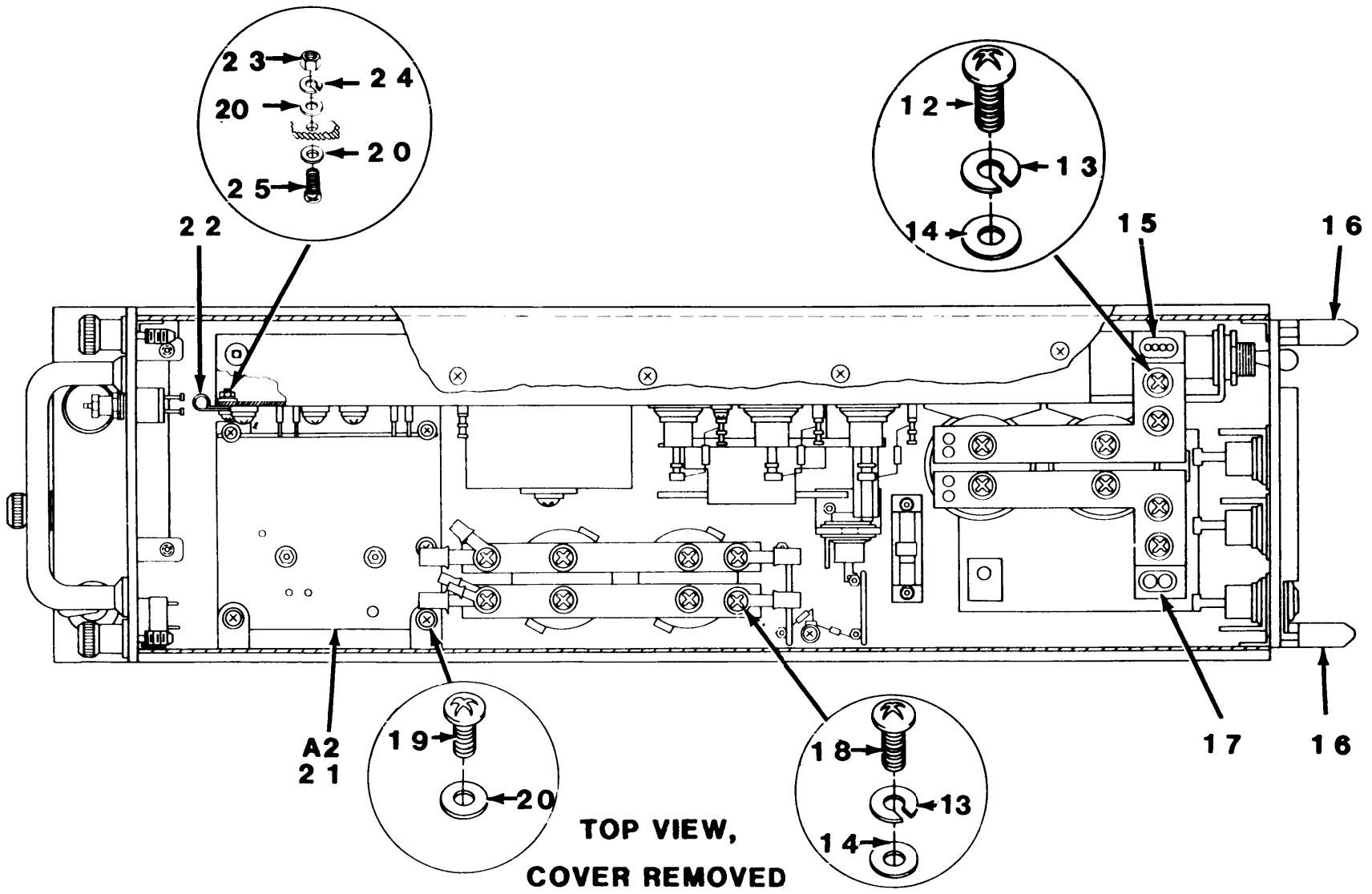
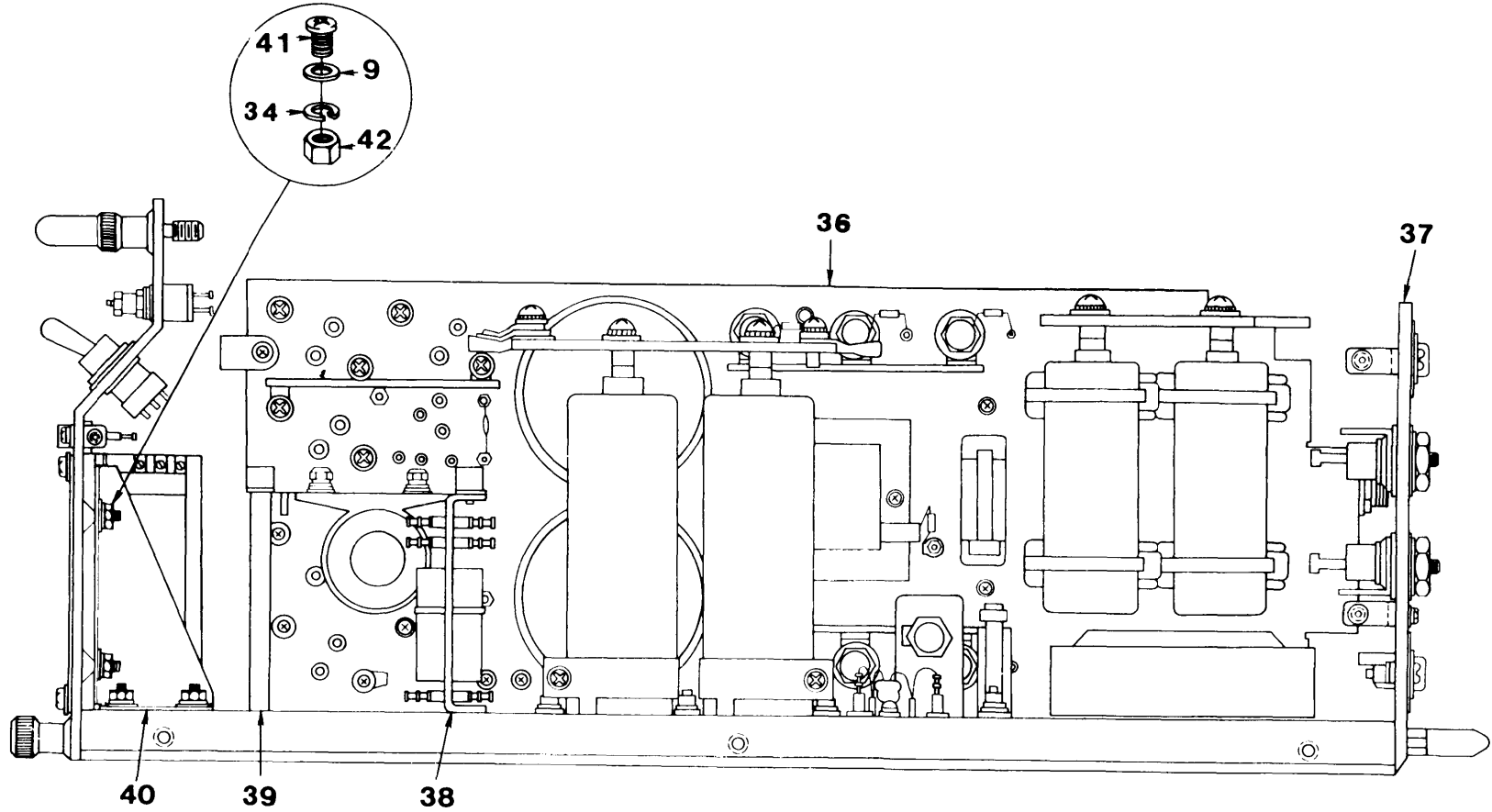


Figure 1. Converter, Direct Current CV-3734/T (Sheet 2 of 4).



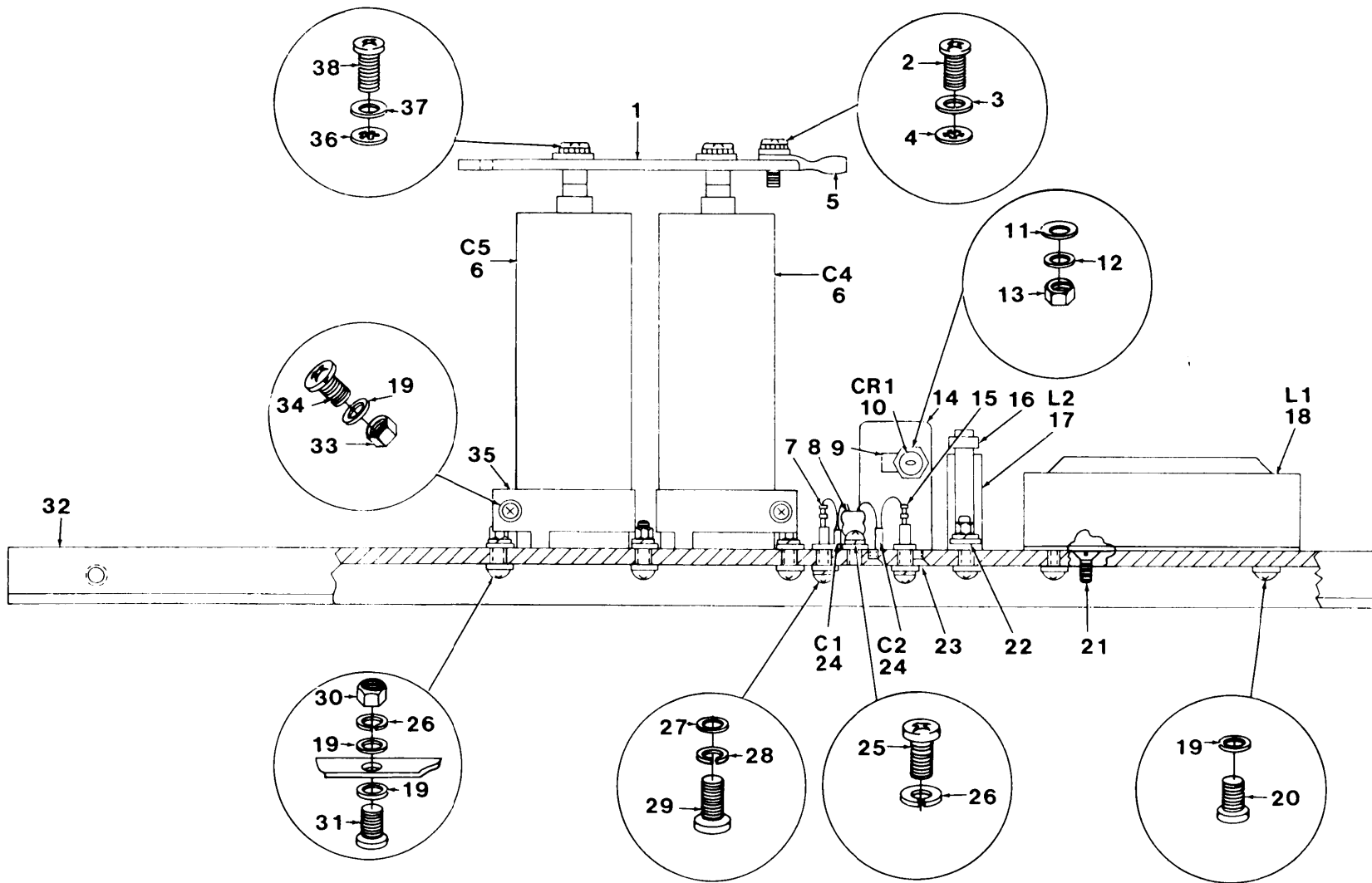
**RIGHT SIDE VIEW,
COVER REMOVED**

EL9AY004

Figure 1. Converter, Direct Current CV-3734/T (Sheet 4 of 4).

(1) ILLUSTRATION (a) (b) FIG ITEM NO NO	(2) SMR CODE	(3) NATIONAL STOCK NUMBER	(4) FSCM	(5) PART NUMBER	(6) DESCRIPTION USABLE ON CODE GROUP 00 CONVERTER, DIRECT CURRENT, CV-3734/T	(7) U/M	(8) QTY INC IN UNIT
1 1	XBHZZ		56996	B4025677	COVER, ASSEMBLY	EA	1
1 2	PAHZZ	5305-01-148-4476	96906	MS24693-4	SCREW, MACHINE	EA	5
1 3	XBOHH		56996	B4025671	FRONT PANEL ASSY	EA	1
1 4	XBHZZ		56996	B4025683	PLATE, ID	EA	1
1 5	PAHZZ	5310-00-595-6761	96906	MS15795-802	WASHER, FLAT	EA	2
1 6	PAHZZ	5310-00-928-2690	96906	MS35338-134	WASHER, LOCK	EA	2
1 7	PAHZZ	5305-00-054-5636	96906	MS51957-2	SCREW, MACHINE	EA	2
1 8	PAHZZ	5305-00-054-6652	96906	MS51957-28	SCREW, MACHINE	EA	4
1 9	PAHZZ	5310-00-722-5998	96906	MS15795-805	WASHER, FLAT	EA	10
1 10	PAHZZ	5305-00-054-5648	96906	MS51957-14	SCREW, MACHINE	EA	29
1 11	PAHZZ	5310-00-782-1349	96906	MS15795-804	WASHER, FLAT	EA	20
1 12	XBHZZ		70318	B4025863-2	SCREW, MACHINE	EA	6
1 13	XBHZZ		78189	1108-01	WASHER, LOCK	EA	8
1 14	PAHZZ	5310-00-045-5206	96906	MS15795-907	WASHER, FLAT	EA	8
1 15	XBHZZ		56996	B4025709-1	BAR, BUS	EA	1
1 16	PAHZZ	5315-01-015-1218	80063	SM-B-743416	PIN, ALIGNMENT	EA	2
1 17	XBHZZ		56996	B4025709-2	BAR, BUS	EA	1
1 18	XBHZZ		70318	B4025863-1	SCREW, MACHINE	EA	2
1 19	PAHZZ	5305-00-054-5650	96906	MS51957-16	SCREW, MACHINE	EA	1
1 20	PAHZZ	5310-00-595-6211	96906	MS15795-803	WASHER, FLAT	EA	17
1 21	PAHHH		56996	B4025676	CIRCUIT CARD ASSY	EA	1
1 22	XBHZZ		80205	NAS1397R5N	CLAMP, LOOP	EA	3
1 23	PAHZZ	5310-00-810-7785	80205	NAS671-4	NUT, PLAIN, HEXAGON	EA	1
1 24	PAHZZ	5310-00-933-8118	96906	MS35338-135	WASHER, LOCK	EA	6
1 25	PAHZZ	5305-00-054-5649	96906	MS51957-15	SCREW, MACHINE	EA	6
1 26	PAHHH		56996	B4025675	CIRCUIT CARD ASSY	EA	1
1 27	XBHZZ		56996	B4025877	HARNES ASSEMBLY	EA	1
1 28	XBHHH		56996	B4025673	BASE PLATE ASSEMBLY	EA	1
1 29	PAHZZ		96906	MS24693-27	SCREW, MACHINE	EA	2
1 30	PAHZZ	5305-01-049-1734	96906	MS24693-6	SCREW, MACHINE	EA	4
1 31	XBHZZ		56996	B4025713	PLATE, LOCKING	EA	1
1 32	XBHZZ		56996	B4025721	CLAMP, PWB	EA	4
1 33	PAHZZ	5305-00-411-0683	96906	MS51957-123	SCREW, MACHINE	EA	4
1 34	PAHZZ	5310-00-929-6395	96906	MS35338-136	WASHER, LOCK	EA	8
1 35	XBHZZ		56996	B4025878	HARNES ASSEMBLY	EA	1
1 36	XBHHH		56996	B4025674	HEATSINK ASSEMBLY	EA	1
1 37	XBHHH		56996	B4025672	REAR PANEL ASSEMBLY	EA	1
1 38	XBHZZ		56996	B4025876	PLATE, MTG, DIO ASSY	EA	1

(1)	(2)	(3)	(4)	(5)	(6)	(7)	(8)	
ILLUSTRATION					DESCRIPTION		QTY	
(a)	(b)	NATIONAL					INC	
FIG	ITEM	SMR	STOCK	PART			IN	
NO	NO	CODE	NUMBER	FSCM	NUMBER	USABLE ON CODE	U/M	UNIT
1	39	XBHZZ		56996	B4025716	BAR,SUPPORT ASSY	EA	1
1	40	XBHZZ		5699B	4025839	GUSSET	EA	1
1	41	PAHZZ	5305-01-091-1209	96906	MS24693-26	SCREW,MACHINE	EA	2
1	42	PAHZZ	5310-00-631-1294	80205	NAS671-6	NUT,PLAIN,HEXAGON	EA	4

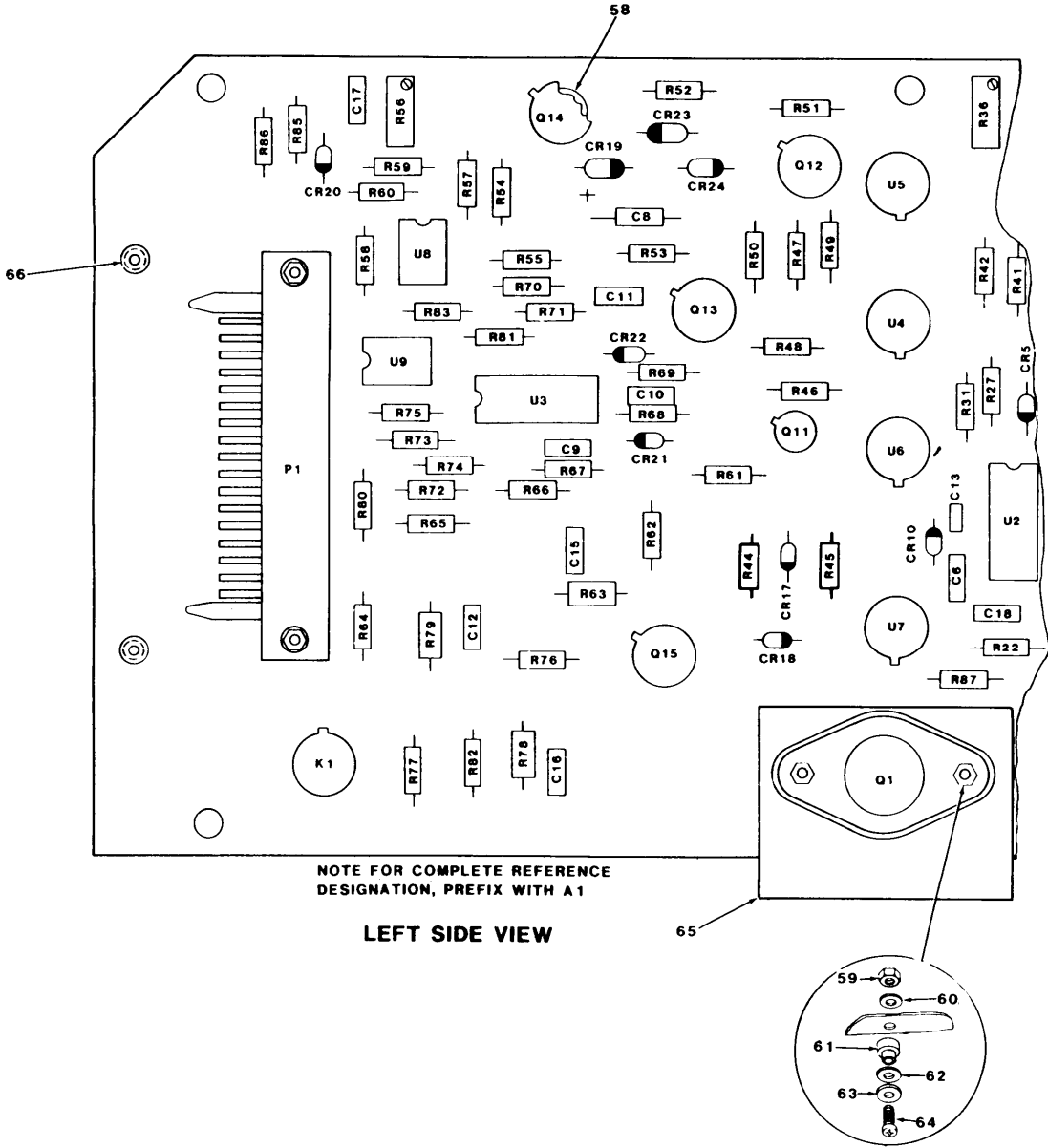


TM11-6130-429-40P

Figure 2. Baseplate Assembly.

EL9AY005

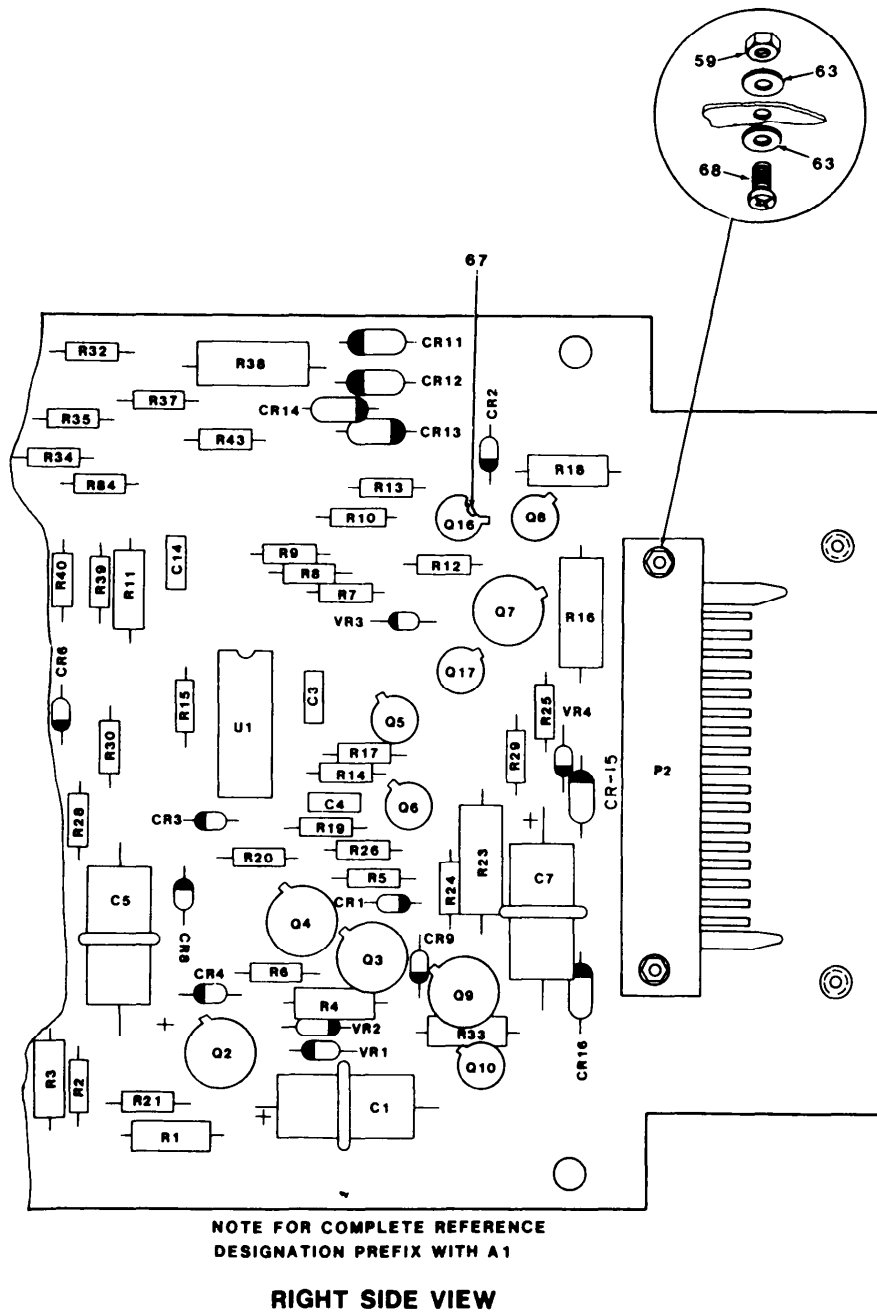
(1) ILLUSTRATION (a) (b) FIG ITEM NO NO	(2) SMR CODE	(3) NATIONAL STOCK NUMBER	(4) FSCM	(5) PART NUMBER	(6) DESCRIPTION USABLE ON CODE GROUP 01 BASEPLATE ASSEMBLY	(7) U/M	(8) QTY INC IN UNIT
2	1	XBHZZ		56996 B4025714	BAR, BUS, ASSEMBLY	EA	2
2	2	XBHZZ		70318 B4025863-1	SCREW, MACHINE	EA	2
2	3	PAHZZ	5310-00-045-5206	96906 MS15795-907	WASHER, FLAT	EA	2
2	4	XBHZZ		78189 1108-01	WASHER, LOCK, EXT T	EA	2
2	5	PAHZZ	5940-00-143-4775	96906 MS25036-156	TERMINAL, LUG	EA	2
2	6	PAHZZ		81349 M39018/06-0141	CAPACITOR, FXD, ELCTL	EA	2
2	7	XBHZZ	5940-01-085-0634	17117 2396-14-1	TERMINAL, STUD	EA	2
2	8	XBHZZ	5940-00-427-1946	79963 440-6	TERMINAL, LUG	EA	1
2	9	XBHZZ		56996 B4025829	LUG, SOLDER	EA	1
2	10	PAHZZ	5961-00-833-3042	81349 JAN1N1186	SEMICONDUCTOR DEVIC	EA	1
2	11	PAHZZ	5970-01-017-2937	80063 SM-A-752086	INSULATOR, WASHER	EA	2
2	12	PAHZZ		96906 MS15795-910NP	WASHER, FLAT	EA	1
2	13	PAHZZ		96906 MS35650-3255NP	NUT, HEXAGON	EA	1
2	14	XBHZZ		56996 B4025864	BRACKET, DIODE, ASSY	EA	1
2	15	XBHZZ		17117 5629-14-1	TERMINAL, STANDOFF	EA	2
2	16	XBHZZ		95987 G-15	CABLE TIE, NYLON	EA	1
2	17	XBHZZ		56996 B4025695	INDUCTOR ASSEMBLY	EA	1
2	18	XBHZZ		09004 2412	INDUCTOR, POWER	EA	1
2	19	PAHZZ	5310-00-880-5976	96906 MS15795-806	WASHER, FLAT	EA	17
2	20	PAHZZ	5305-00-054-6652	96906 MS51957-28	SCREW, MACHINE	EA	4
2	21	PAHZZ		96906 MS24693-50	SCREW, MACHINE	EA	1
2	22	XBHZZ		96987 C-4	CRADLE, MOUNTING	EA	1
2	23	PAHZZ	5305-01-091-1209	96906 MS24693-26	SCREW, MACHINE	EA	3
2	24	PAHZZ	5910-00-010-8718	81349 M39014-02-1338	CAPACITOR, FIXED, CER	EA	2
2	25	PAHZZ	5305-00-054-6650	96906 MS51957-26	SCREW, MACHINE	EA	1
2	26	PAHZZ	5310-00-929-6395	96906 MS35338-136	WASHER, LOCK	EA	7
2	27	PAHZZ	5310-00-782-1349	96906 MS15795-804	WASHER, FLAT	EA	2
2	28	PAHZZ	5310-00-933-8118	96906 MS35338-135	WASHER, LOCK	EA	2
2	29	PAHZZ	5305-00-054-5648	96906 MS51957-14	SCREW, MACHINE	EA	2
2	30	PAHZZ	5310-00-934-9761	96906 MS35649-264	NUT, PLAIN, HEXAGON	EA	6
2	31	PAHZZ	5305-00-054-6653	96906 MS51957-29	SCREW, MACHINE	EA	5
2	32	XBHZZ		56966 B4025688	PLATE, MTG, BASE, ASSY	EA	1
2	33	PAHZZ	5310-00-176-6341	96906 MS17830-06C	NUT, SELF-LOCKING, HE	EA	2
2	34	PAHZZ	5305-00-411-0683	96906 MS51957-123	SCREW, MACHINE	EA	2
2	35	XBHZZ		09004 19938-5	RETAINER, CAPACITOR	EA	2
2	36	XBHZZ		78189 1110-04	WASHER, LOCK, EXT T	EA	4
2	37	XBHZZ	5310-00-045-5207	96906 MS15795-908	WASHER, FLAT	EA	4
2	38	XBHZZ		70318 B4025863-3	SCREW, MACHINE	EA	4



NOTE FOR COMPLETE REFERENCE
DESIGNATION, PREFIX WITH A1

LEFT SIDE VIEW

Figure 3. Printed Wiring Board (A1) (Sheet 1 of 4).



EL9AY007

Figure 3. Printed Wiring Board (A1) (Sheet 2 of 4).

REF DES	ITEM NO	REF DES	ITEM NO	REF DES	ITEM NO	REF DES	ITEM NO
C1	1	CR4	10	K1	13	R1	19
C3	2	CR5	10	P1	14	R2	20
C4	3	CR6	10	P2	14	R3	21
C5	1	CR8	10	Q1	15	R4	22
C6	3	CR9	10	Q2	16	R5	23
C7	1	CR10	10	Q3	16	R6	24
C8	4	CR11	11	Q4	16	R7	24
C9	3	CR12	11	Q5	17	R8	20
C10	3	CR13	11	Q6	17	R9	24
C11	3	CR14	11	Q7	16	R10	25
C12	5	CR15	11	Q8	17	R11	21
C13	6	CR16	11	Q9	16	R12	26
C14	7	CR17	10	Q10	17	R13	27
C15	5	CR18	10	Q11	17	R14	20
C16	5	CR19	12	Q12	16	R15	27
C17	8	CR20	10	Q13	16	R16	28
C18	9	CR21	10	Q14	16	R17	20
CR1	10	CR22	10	Q15	16	R18	29
CR2	10	CR23	12	Q16	18	R19	24
CR3	10	CR24	12	Q17	18	R20	20

NOTE: FOR COMPLETE REFERENCE

DESIGNATION, PREFIX WITH AI

EL9AY008

Figure 3. Printed Wiring Board (A1) (Sheet 3 of 4).

REF DES	ITEM NO	REF DES	ITEM NO	REF DES	ITEM NO	REF DES	ITEM NO
R21	30	R41	36	R61	25	R81	41
R22	25	R42	37	R62	37	R82	25
R23	28	R43	23	R63	46	R83	49
R24	26	R44	38	R64	25	R84	50
R25	25	R45	26	R65	47	R85	26
R26	31	R46	39	R66	48	R86	42
R27	23	R47	40	R67	32	R87	20
R28	24	R48	20	R68	48	U1	51
R29	27	R49	20	R69	32	U2	52
R30	24	R50	41	R70	48	U3	53
R31	23	R51	42	R71	32	U4	54
R32	20	R52	43	R72	20	U5	54
R33	29	R53	23	R73	20	U6	54
R34	32	R54	24	R74	49	U7	54
R35	20	R55	39	R75	20	U8	55
R36	33	R56	33	R76	45	U9	55
R37	34	R57	44	R77	25	VR1	56
R38	35	R58	45	R78	46	VR2	56
R39	32	R59	24	R79	46	VR3	57
R40	24	R60	39	R80	49	VR4	57

NOTE: FOR COMPLETE REFERENCE

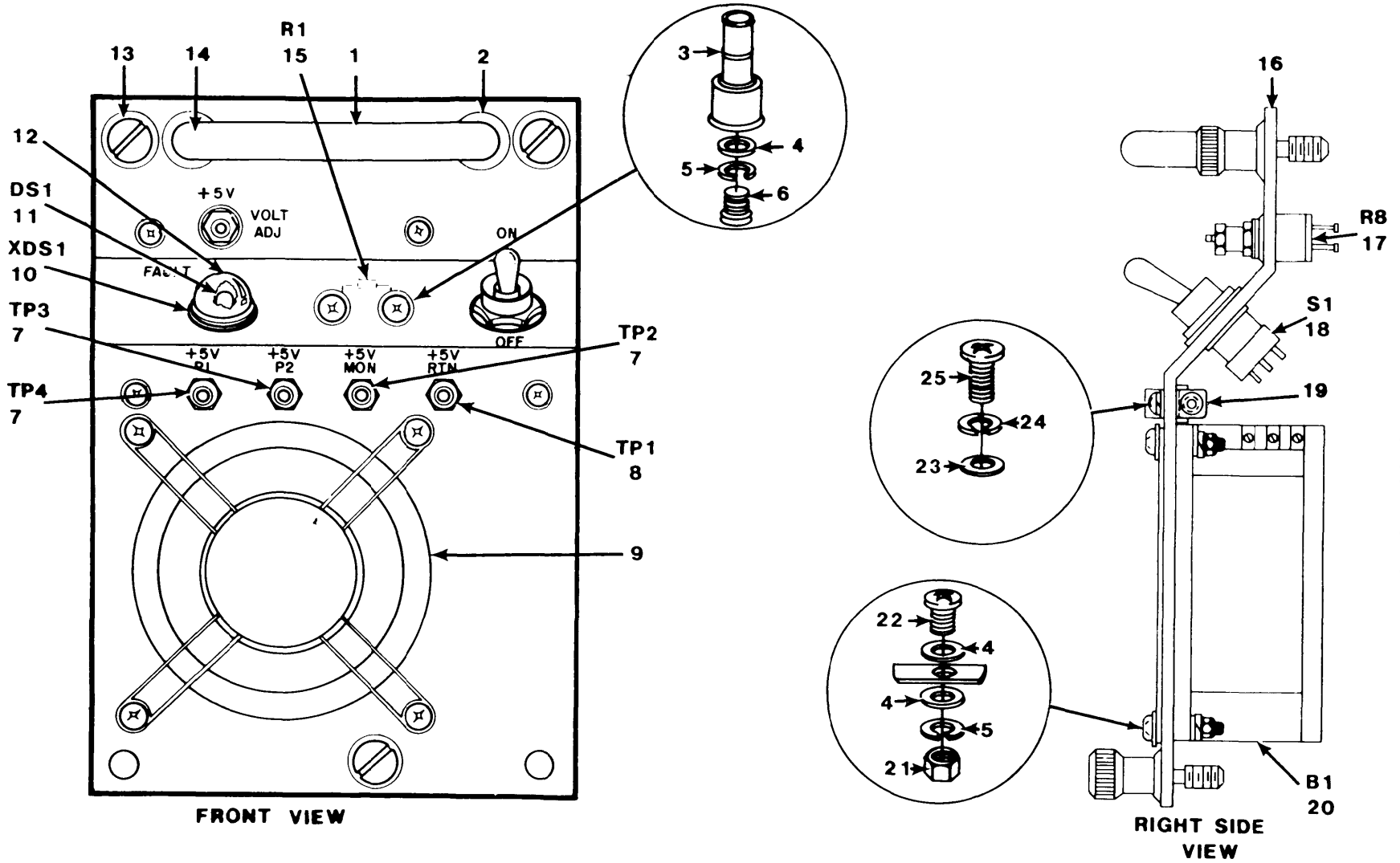
DESIGNATION, PREFIX WITH A1

EL9AY009

Figure 3. Printed Wiring Board (A1) (Sheet 4 of 4).

(1) ILLUSTRATION (a) (b) FIG ITEM NO NO	(2) SMR CODE	(3) NATIONAL STOCK NUMBER	(4) FSCM	(5) PART NUMBER	(6) DESCRIPTION USABLE ON CODE GROUP 02 PRINTED WIRING BOARD,A1	(7) U/M	(8) QTY INC IN UNIT
3	1	PAHZZ	5910-00-254-2844	81349	M39018/01-0623	CAPACITOR, FIXED, ELE	EA 3
3	2	PAHZZ	5910-00-010-8718	81349	M39014-02-1338	CAPACITOR, FIXED, CER	EA 1
3	3	PAHZZ	5910-00-113-5286	81349	M39014/02-1356	CAPACITOR, FIXED, CER	EA 5
3	4	PAHZZ	5910-00-868-6219	81349	M39003/01-2268	CAPACITOR, FIXED, ELE	EA 1
3	5	PAHZZ	5910-00-113-9817	81349	M39014-02-1345	CAPACITOR, FIXED, CER	EA 3
3	6	XDHZZ		81349	M39014/01-1317	CAPACITOR, FIXED, CER	EA 1
3	7	PAHZZ	5910-00-113-5465	81349	CK06BX474K	CAPACITOR, FIXED, CER	EA 1
3	8	PAHZZ	5910-00-113-5499	81349	M39014-02-1350	CAPACITOR, FIXED, CER	EA 1
3	9	PAHZZ	5910-00-101-2381	81349	M39014/02-1326	CAPACITOR, FIXED, CER	EA 1
3	10	PAHZZ	5961-01-156-0109	81349	JAN1N4150-1	SEMICONDUCTOR DEVIC	EA 14
3	11	PAHZZ	5961-00-483-4579	81349	JAN1N5416	SEMICONDUCTOR DEVIC	EA 6
3	12	PAHZZ	5961-00-628-5928	81349	JAN1N645-1	SEMICONDUCTOR DEVIC	EA 3
3	13	PAHZZ	5945-01-120-8775	81349	M39016/11-017P	RELAY, ELECTROMAGNET	EA 1
3	14	PAHZZ	5935-00-402-3830	81349	M21097/14-01	ADAPTER, CONNECTOR	EA 2
3	15	PAHZZ	5961-00-139-1931	81349	JAN2N3740	TRANSISTOR	EA 1
3	16	PAHZZ	5935-00-913-1823	96906	MS3181-12N	COVER, ELECTRICAL CO	EA 9
3	17	PAHZZ	5961-00-925-3777	81349	JAN2N2907A	TRANSISTOR	EA 5
3	18	PAHZZ	5961-00-925-3777	81349	JAN-2N2907A	TRANSISTOR	EA 2
3	19	PAHZZ	5905-00-401-8678	81349	RLR20C3901GR	RESISTOR, FIXED, FILM	EA 1
3	20	PAHZZ	5905-01-047-1529	81349	RLR07C1001GR	RESISTOR, FIXED, FILM	EA 13
3	21	PAHZZ	5905-00-196-7213	81349	RLR20C6800GR	RESISTOR, FIXED, FILM	EA 2
3	22	PAHZZ	5905-00-914-9236	81349	RLR20C1800GR	RESISTOR, FIXED, FILM	EA 1
3	23	PAHZZ	5905-01-139-5314	81349	RLR07C1002GS	RESISTOR, FIXED, FILM	EA 5
3	24	PAHZZ	5905-00-438-0505	81349	RLR07C4701GR	RESISTOR, FIXED, FILM	EA 9
3	25	PAHZZ	5905-00-240-7979	81349	RLR07C4700GR	RESISTOR, FIXED, FILM	EA 7
3	26	PAHZZ	5905-00-458-9267	81349	RLR07C2200GR	RESISTOR, FIXED, FILM	EA 4
3	27	PAHZZ	5905-00-491-2638	81349	RLR07C2701GR	RESISTOR, FIXED, FILM	EA 3
3	28	PAHZZ	5905-00-409-3415	81349	RWR89S1000FR	RESISTOR, FIXED, WIRE	EA 2
3	29	PAHZZ	5905-00-484-7566	81349	RLR20C10ROGR	RESISTOR, FIXED, FILM	EA 2
3	30	PAHZZ	5905-00-563-1595	81349	RLR07C4702GR	RESISTOR, FIXED, FILM	EA 1
3	31	PAHZZ	5905-00-240-7982	81349	RLR07C6800GR	RESISTOR, FIXED, FILM	EA 1
3	32	PAHZZ	5905-00-240-7954	81349	RLR07C1502GR	RESISTOR, FIXED, FILM	EA 5
3	33	PAHZZ	5905-00-594-2643	81349	RJR24FW102P	RESISTOR, VARIABLE, N	EA 2
3	34	PAHZZ	5905-00-240-2748	81349	RLR07C5602GR	RESISTOR, FIXED, FILM	EA 1
3	35	PAHZZ	5905-00-431-5225	81349	RWR89S1ROOFR	RESISTOR, FIXED, WIRE	EA 1
3	36	PAHZZ	5905-00-150-5256	81349	RLR07C3902GR	RESISTOR, FIXED, FILM	EA 1
3	37	PAHZZ	5905-01-047-1530	81349	RLR07C2201GR	RESISTOR, FIXED, FILM	EA 2
3	38	PAHZZ	5905-00-413-1029	81349	RLR07C3900GR	RESISTOR, FIXED, FILM	EA 1
3	39	PAHZZ	5905-01-138-6261	81349	RLR07C3301GS	RESISTOR, FIXED, FILM	EA 3

(1) ILLUSTRATION (a) (b) FIG ITEM NO NO	(2) SMR CODE	(3) NATIONAL STOCK NUMBER	(4) FSCM	(5) PART NUMBER	(6) DESCRIPTION USABLE ON CODE	(7) U/M	(8) QTY INC IN UNIT
3 40	PAHZZ	5905-01-149-1143	81349	RLR07C5601GS	RESISTOR, FIXED, FILM	EA	1
3 41	PAHZZ	5905-01-148-6092	81349	RLR07C1501GS	RESISTOR, FIXED, FILM	EA	2
3 42	PAHZZ	5905-01-146-4350	81349	RLR07C1500GS	RESISTOR, FIXED, FILM	EA	2
3 43	PAHZZ	5905-00-240-7955	81349	RLR07C22ROGR	RESISTOR, FIXED, FILM	EA	1
3 44	PAHZZ	5905-00-240-2747	81349	RLR07C3901GR	RESISTOR, FIXED, FILM	EA	1
3 45	PAHZZ	5905-00-450-2827	81349	RLR07C3300GR	RESISTOR, FIXED, FILM	EA	2
3 46	PAHZZ	5905-00-307-3501	81349	RNC60H1871BS	RESISTOR, FIXED, FILM	EA	3
3 47	PAHZZ	5905-00-004-6080	81349	RNC60H127OFS	RESISTOR, FIXED, FILM	EA	1
3 48	PAHZZ	5905-01-050-4106	81349	RLR07C1004GR	RESISTOR, FIXED, FILM	EA	3
3 49	PAHZZ	5905-00-279-6497	81349	RNC60H3011BS	RESISTOR, FIXED, FILM	EA	3
3 50	PAHZZ	5905-01-064-8328	81349	RLR07C1003GR	RESISTOR, FIXED, FILM	EA	1
3 51	PAHZZ	5962-01-077-5072	34333	SG1524J8838	MICROCIRCUIT, LINEAR	EA	1
3 52	PAHZZ	5962-01-088-3862	81349	M38510/11201BCB	MICROCIRCUIT, LINEAR	EA	1
3 53	PAHZZ	5962-01-113-0832	81349	M38510/11005BCB	MICROCIRCUIT, LINEAR	EA	1
3 54	PAHZZ	5961-01-018-2540	81349	JAN4N22	COUPLER, OPTOELECTRO	EA	4
3 55	XBHZZ		01295	TL431MJG/8838	MICROCIRCUIT	EA	2
3 56	PAHZZ	5961-01-124-9684	81349	JAN1N756A-1	SEMICONDUCTOR DEVIC	EA	2
3 57	PAHZZ	5961-01-124-9687	81349	JAN1N751A-1	SEMICONDUCTOR DEVIC	EA	2
3 58	XBHZZ	5999-00-476-6202	08289	503-026NY	MOUNTING PAD, ELECTR	EA	9
3 59	PAHZZ	5310-00-810-7785	80205	NAS671-4	NUT, PLAIN, HEXAGON	EA	6
3 60	PAHZZ	5310-00-933-8118	96906	MS35338-135	WASHER, LOCK	EA	2
3 61	XBHZZ		56996	B4025805-25	WASHER, INSULATING	EA	2
3 62	XBHZZ	5330-00-402-5897	08530	RM-967	GASKET	EA	1
3 63	PAHZZ	5310-00-595-6211	96906	MS15795-803	WASHER, FLAT	EA	10
3 64	PAHZZ	5305-00-054-5650	96906	MS51957-16	SCREW, MACHINE	EA	2
3 65	XBHZZ		56996	B4025699	HEATSINK ASSEMBLY	EA	1
3 66	PAHZZ	5310-00-937-0294	46384	KFS2-632	NUT, PLAIN, CLINCH	EA	4
3 67	PAHZZ		81349	M38527/1-01	PAD, TRANSISTOR	EA	7
3 68	PAHZZ	5305-00-054-5652	96906	MS51957-18	SCREW, MACHINE	EA	4

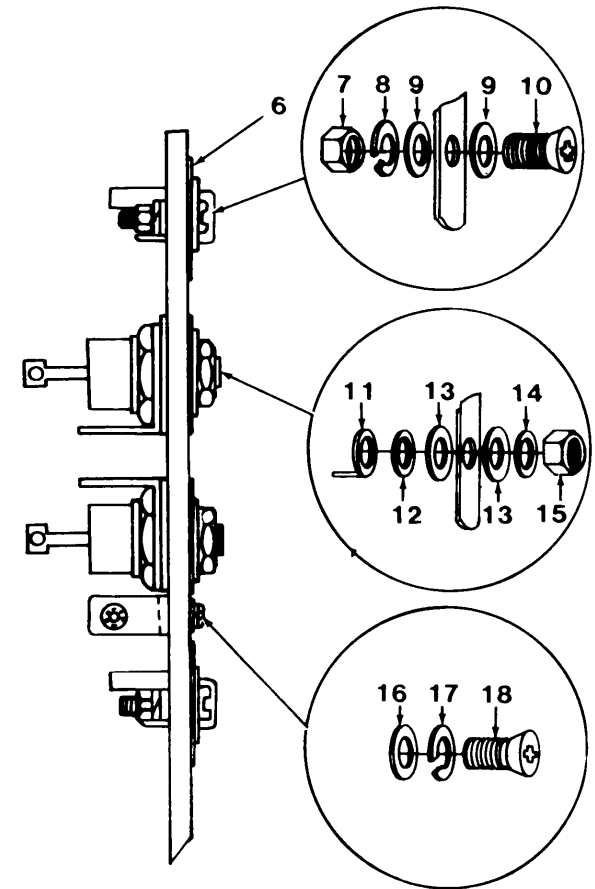
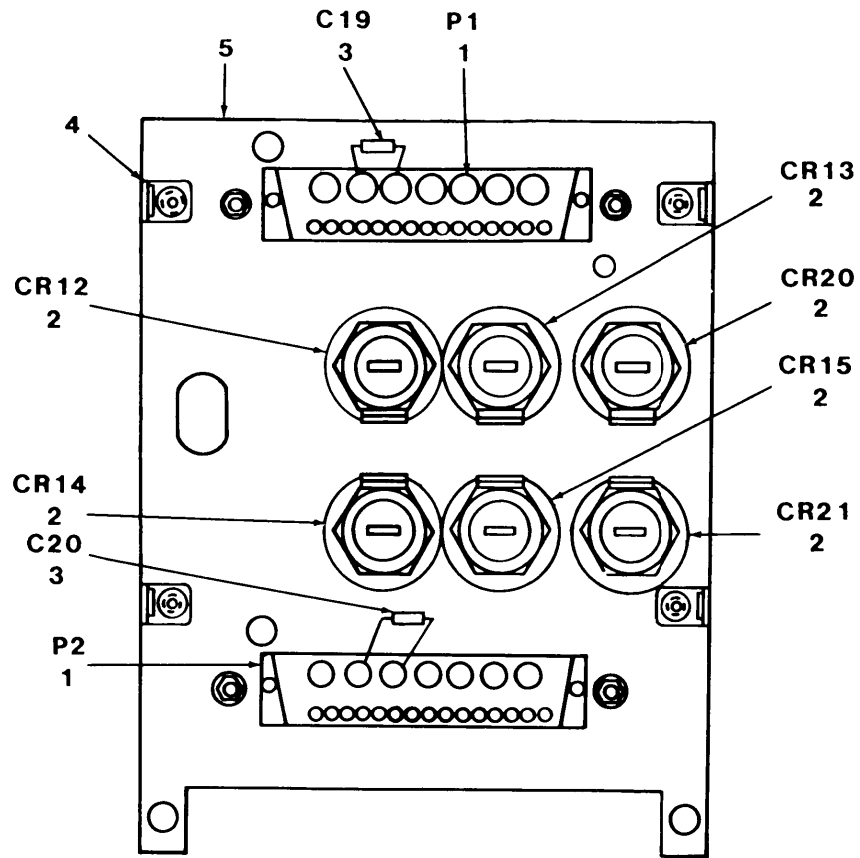


TM11-6130-429-40P

EL9AY010

Figure 4. Front Panel Assembly.

(1) ILLUSTRATION (a) (b) FIG ITEM NO NO	(2) SMR CODE	(3) NATIONAL STOCK NUMBER	(4) FSCM	(5) PART NUMBER	(6) DESCRIPTION USABLE ON CODE	(7) U/M	(8) QTY INC IN UNIT
GROUP 03 FRONT PANEL ASSEMBLY							
4	1	PAHZZ	5340-00-761-1258	96906	MS39087-6	HANDLE,BOW	EA 1
4	2	PAHZZ	5340-01-043-7886	06540	16023-B-25D	FERRULE,HANDLE	EA 2
4	3	XBHZZ		17117	3041-14-1	STANDOFF,DBL TURRET	EA 2
4	4	PAHZZ	5310-00-880-5976	96906	MS15795-806	WASHER,FLAT	EA 10
4	5	PAHZZ	5310-00-929-6395	96906	MS35338-136	WASHER,LOCK	EA 8
4	6	PAHZZ	5305-00-054-6651	96906	MS51957-27	SCREW,MACHINE	EA 2
4	7	PAHZZ	5935-00-702-4199	81349	M39024/10-02	JACK,TIP	EA 3
4	8	PAHZZ	5935-00-931-1967	81349	M39024/10-09	JACK,TIP	EA 1
4	9	XBHZZ		56996	B4025757	GUARD,FAN ALTERED ITEM-MAKE FROM (80063) SM-A-317194	EA 1
4	10	PAHZZ	6210-00-813-8265	81349	LH73/1	LIGHT,INDICATOR	EA 1
4	11	PAOZZ	6240-00-155-7836	96906	MS25237-327	LAMP,INCANDESCENT	EA 1
4	12	PAOZZ	6210-00-990-4637	81349	LC12RN2	LENS,LIGHT	EA 1
4	13	XBHZZ		94222	58-27-310-24	SCREW,EXTERNALLY RE	EA 3
4	14	PHAZZ		96906	MS24693-272	SCREW,MACHINE	EA 2
4	15	PAHZZ	5905-00-926-8706	81349	RLR20C1000GR	RESISTOR,FIXED,FILM	EA 1
4	16	XBHZZ		56996	B4025680	FRONT PANEL SUBASSY	EA 1
4	17	PAHZZ	5905-00-486-6763	81349	RV6TAYSAL02A	RESISTOR,VARIABLE,N	EA 1
4	18	PAHZZ	5930-00-913-2983	96906	MS90311-231	SWITCH,TOGGLE	EA 1
4	19	XBHZZ		56996	B4025712	BRACKET,ANGLE,ASSY	EA 4
4	20	XBHZZ		82877	011-064	FAN,TUBEAXIAL	EA 1
4	21	PAHZZ	5310-00-934-9761	96906	MS35649-264	NUT,PLAIN,HEXAGON	EA 4
4	22	PAHZZ	5305-00-411-0683	96906	MS51957-123	SCREW,MACHINE	EA 4
4	23	PAHZZ	5310-00-782-1349	96906	MS15795-804	WASHER,FLAT	EA 4
4	24	PAHZZ	5310-00-933-8118	96906	MS35338-135	WASHER,LOCK	EA 4
4	25	PAHZZ	5305-00-054-5648	96906	MS51957-14	SCREW,MACHINE	EA 4

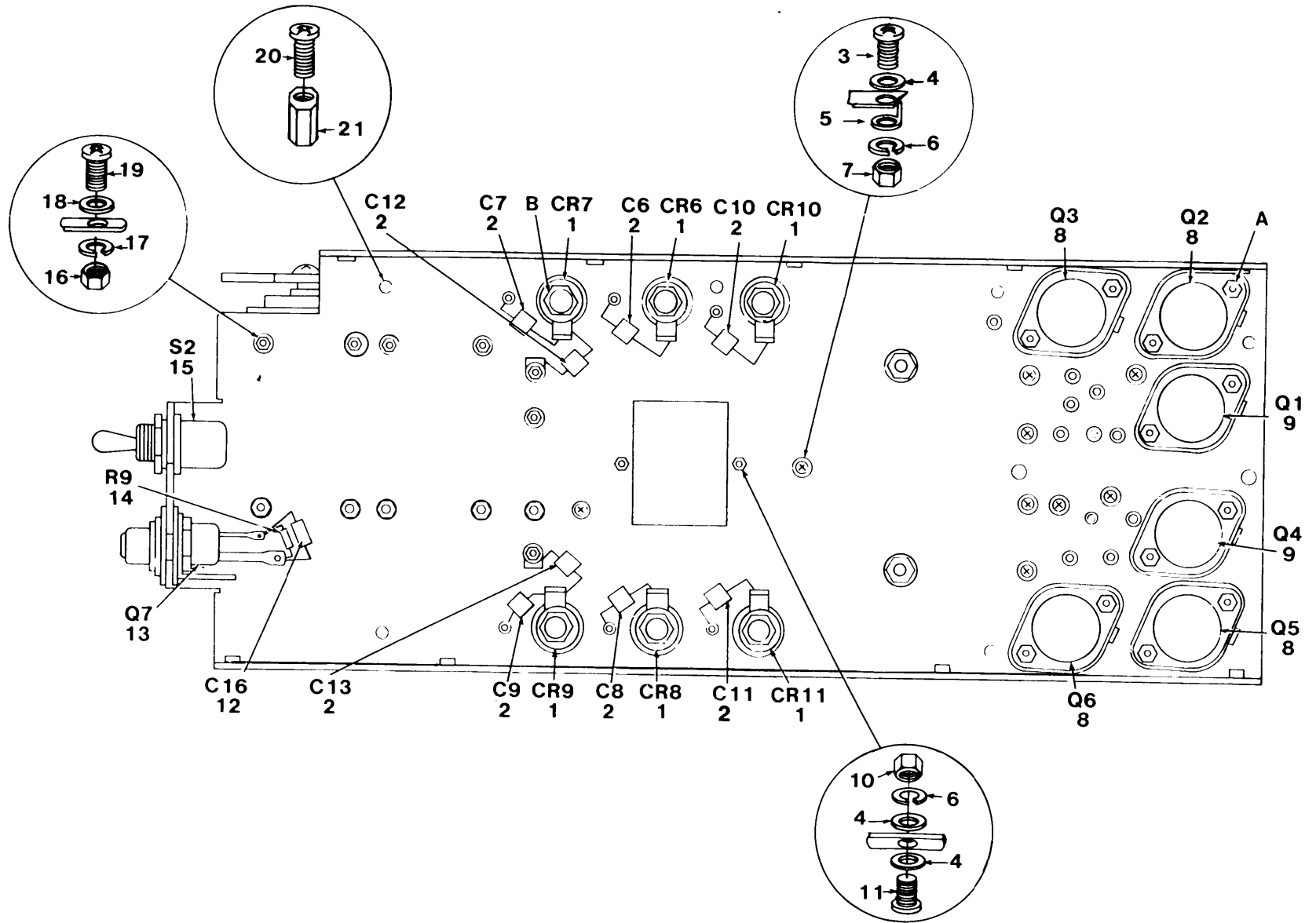


TM 11-6130-429-40P

Figure 5. Rear Panel Assembly.

EL9AY011

(1) ILLUSTRATION (a) FIG NO	(2) (b) ITEM NO	(3) NATIONAL STOCK NUMBER	(4) FSCM	(5) PART NUMBER	(6) DESCRIPTION USABLE ON CODE	(7) U/M	(8) QTY INC IN UNIT
GROUP 04 REAR PANEL ASSEMBLY							
5	1	XBHZZ 5935-00-432-6519	71468	DDMM-24W7P	CONNECTOR, RECEPTACLE REQUIRES SEVEN EACH, (71468) DM53745-28 HIGH POWER CONTACTS	EA	2
5	2	XBHZZ	01281	SD5154	DIODE, RECTIFIER	EA	6
5	3	PAHZZ 5910-00-010-8721	81349	M39014/02-1419	CAPACITOR, FIXED, CER	EA	2
5	4	XBHZZ	56996	B4025712	BRACKET, ANGLE, ASSY	EA	4
5	5	XBHZZ	56996	B4025685	PLATE, MTG ASSY, REAR	EA	1
5	6	PAHZZ 5935-00-980-3276	71468	DD21961	PLATE, RETAINING, ELE	EA	2
5	7	PAHZZ 5310-00-934-9761	96906	MS35649-264	NUT, PLAIN, HEXAGON	EA	4
5	8	PAHZZ 5310-00-929-6395	96906	MS35338-136	WASHER, LOCK	EA	4
5	9	PAHZZ 5310-00-722-5998	96906	MS15795-805	WASHER, FLAT	EA	8
5	10	PAHZZ 5305-00-411-0683	96906	MS51957-123	SCREW, MACHINE	EA	4
5	11	XBHZZ	56996	B4025829	LUG, SOLDER	EA	6
5	12	XBHZZ	56996	B4025805-10	WASHER, NYLON	EA	6
5	13	PAHZZ 5970-01-017-2937	80063	SM-A-752086	INSULATOR, WASHER	EA	12
5	14	PAHZZ	96906	MS15795-910NP	WASHER, FLAT	EA	6
5	15	PAHZZ	96906	MS35650-3255NP	NUT, HEXAGON	EA	6
5	16	PAHZZ 5310-00-595-6211	96906	MS15795-803	WASHER, FLAT	EA	4
5	17	PAHZZ 5310-00-933-8118	96906	MS35338-135	WASHER, LOCK	EA	4
5	18	PAHZZ 5305-00-054-5648	96906	MS51957-14	SCREW, MACHINE	EA	4



TM11-6130-429-40P

Figure 6. Heatsink Assembly (Sheet 1 of 3).

EL9AY012

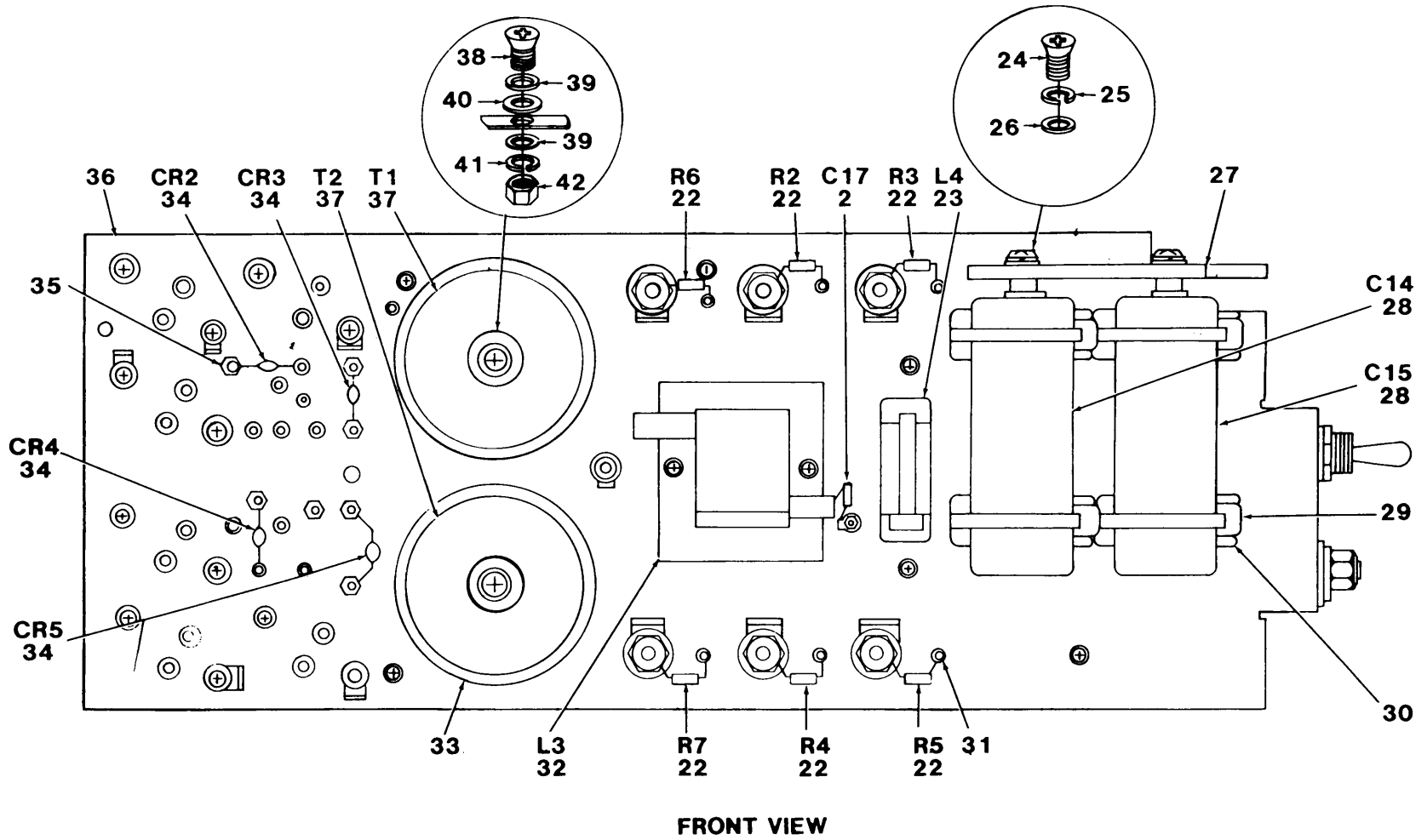
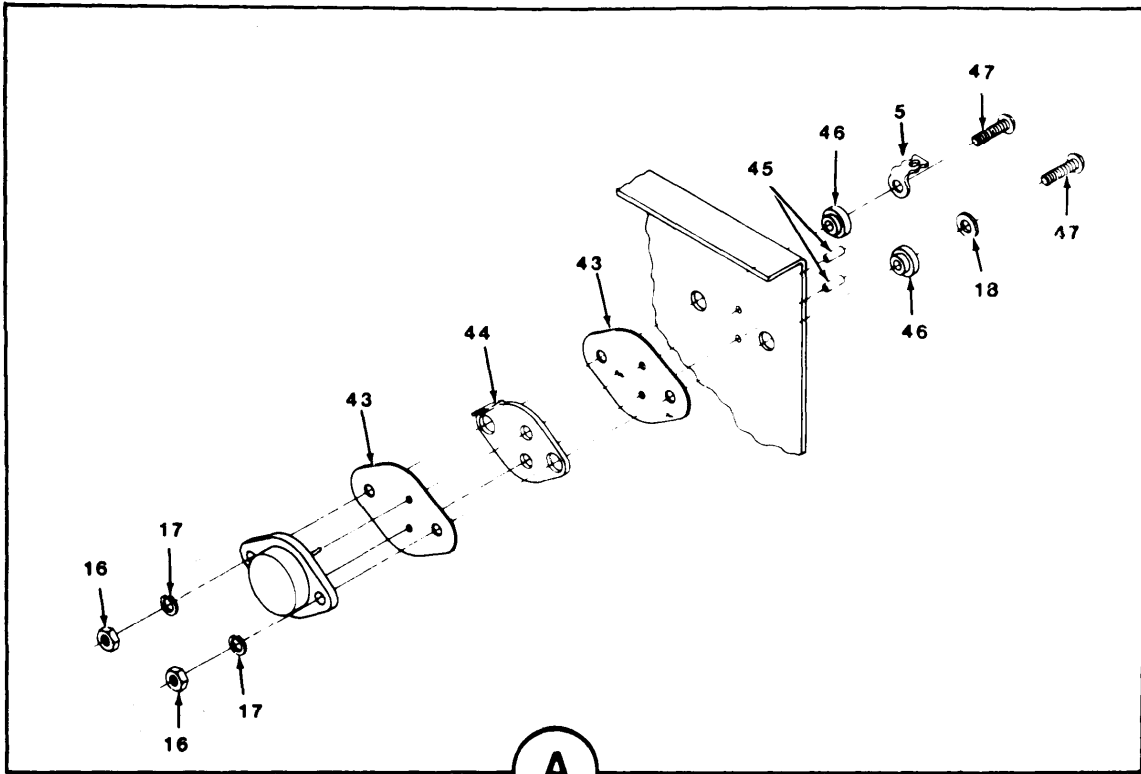
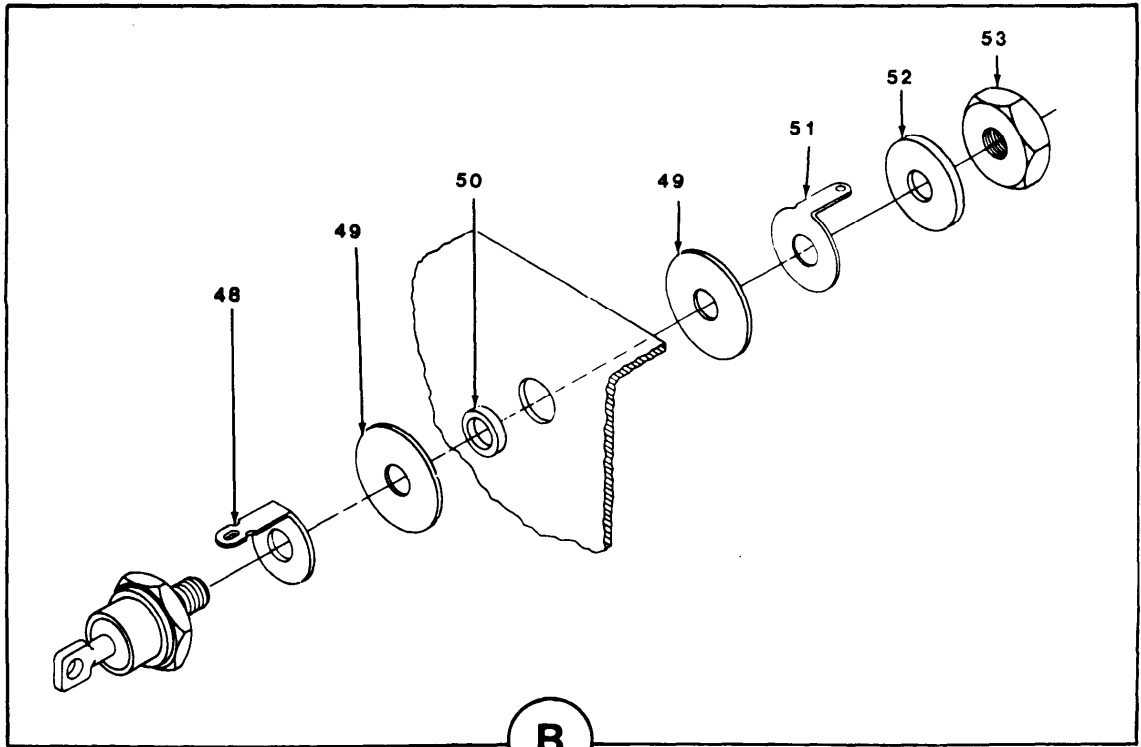


Figure 6. Heatsink Assembly (Sheet 2 of 3).



A



B

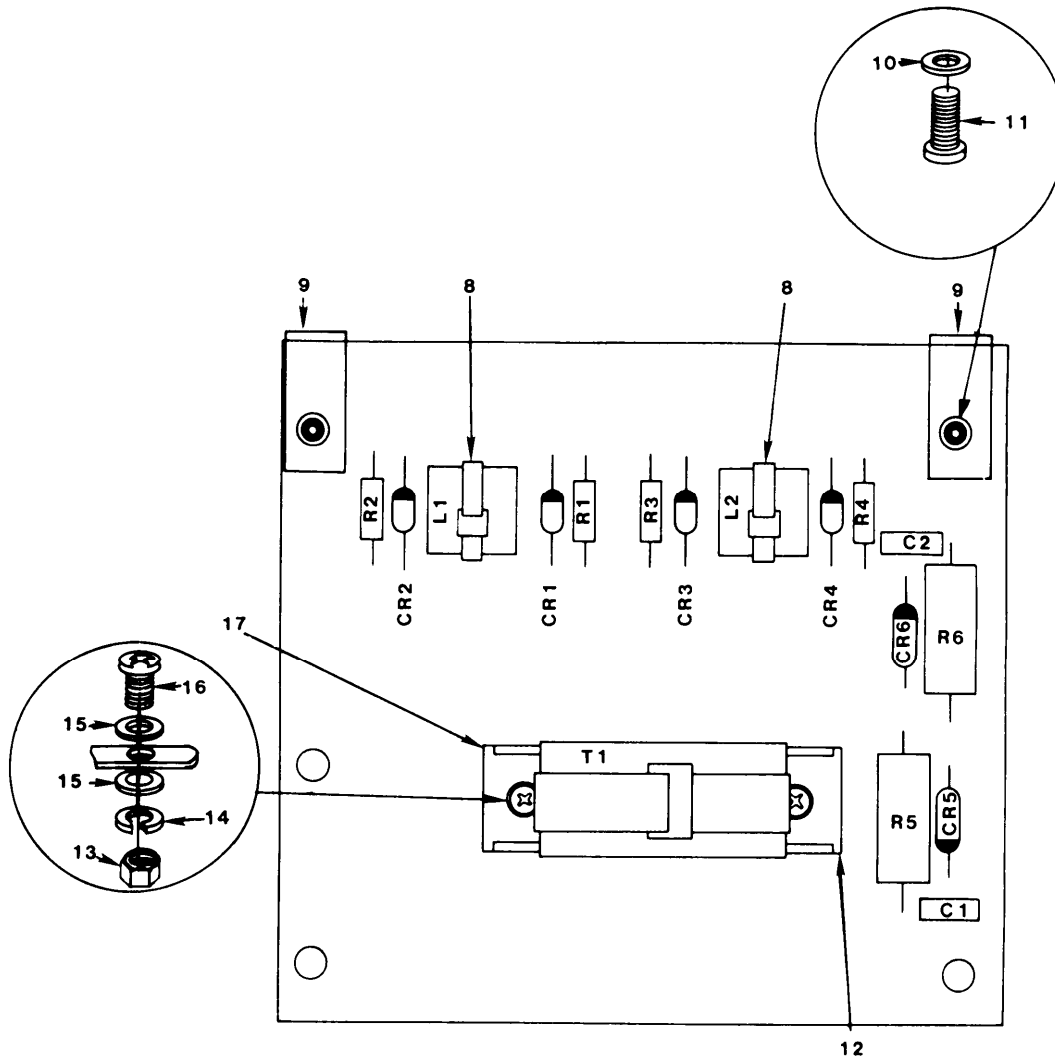
EL9AY014

Figure 6. Heatsink Assembly (Sheet 3 of 3).

(1) ILLUSTRATION (a) (b) FIG ITEM NO NO	(2) SMR CODE	(3) NATIONAL STOCK NUMBER	(4) FSCM	(5) PART NUMBER	(6) DESCRIPTION USABLE ON CODE GROUP 05 HEATSINK ASSEMBLY	(7) U/M	(8) QTY INC IN UNIT
6	1	XBHZZ		0128 SD5154	DIODE,RECTIFIER	EA	6
6	2	PAHZZ	5910-00-113-5499	81349 M39014-02-1350	CAPACITOR, FIXED, CER	EA	9
6	3	PAHZZ	5305-00-054-5648	96906 MS51957-14	SCREW, MACHINE	EA	15
6	4	PAHZZ	5310-00-782-1349	96906 MS15795-804	WASHER, FLAT	EA	19
6	5	XBHZZ	5940-00-427-1946	79963 440-6	TERMINAL, LUG	EA	10
6	6	PAHZZ	5310-00-933-8118	96906 MS35338-135	WASHER, LOCK	EA	17
6	7	PAHZZ	5310-00-810-7785	80205 NAS671-4	NUT, PLAIN, HEXAGON	EA	4
6	8	PAHZZ	5961-01-104-2287	81349 JAN2N6032	TRANSISTOR	EA	4
6	9	PAHZZ	5961-00-600-0311	81349 JAN2N5672	TRANSISTOR	EA	2
6	10	PAHZZ	5310-00-934-9748	96906 MS35649-244	NUT, PLAIN, HEXAGON	EA	2
6	11	PAHZZ	5305-00-400-8531	96906 MS51957-121	SCREW, MACHINE	EA	2
6	12	PAHZZ	5910-00-868-6219	81349 M39003/01-2268	CAPACITOR, FIXED, ELE	EA	1
6	13	XBHZZ	5961-01-003-4560	03508 C147A	SEMICONDUCTOR DEVIC	EA	1
6	14	PAHZZ	5905-00-240-7979	81349 RLR07C4700GR	RESISTOR, FIXED, FILM	EA	1
6	15	PAHZZ	5930-00-913-2983	96906 MS90311-231	SWITCH, TOGGLE	EA	1
6	16	PAHZZ	5310-00-934-9761	96906 MS35649-264	NUT, PLAIN, HEXAGON	EA	22
6	17	PAHZZ	5310-00-929-6395	96906 MS35338-136	WASHER, LOCK	EA	22
6	18	PAHZZ	5310-00-880-5976	96906 MS15795-806	WASHER, FLAT	EA	26
6	19	PAHZZ	5305-00-054-6653	96906 MS51957-29	SCREW, MACHINE	EA	10
6	20	PAHZZ	5305-00-957-2383	96906 MS24693S3	SCREW, MACHINE	EA	1
6	21	XBHZZ		77569 9151	SWITCH, SENSITIVE	EA	5
6	22	PAHZZ	5905-00-113-4859	81349 RCR20G3R9KS	RESISTOR, FIXED, COMP	EA	6
6	23	XBHZZ		56996 B4025695	INDUCTOR ASSEMBLY	EA	1
6	24	XBHZZ		70318 B4025863-3	SCREW, MACHINE	EA	4
6	25	XBHZZ		78189 1110-04	WASHER, LOCK, EXT T	EA	4
6	26	PAHZZ		96906 MS15795-908NP	WASHER, FLAT	EA	4
6	27	XBHZZ		56996 B4025710	BAR, BUS	EA	2
6	28	PAHZZ		81349 M39018/06-0022	CAPACITOR, FXD, ELCTL	EA	2
6	29	XBHZZ		95987 G-15	CABLE TIE, NYLON	EA	5
6	30	XBHZZ		96987 C-4	CRADLE, MOUNTING	EA	5
6	31	XBHZZ		04013 DFU-2Y	TERMINAL, FEED THRU	EA	17
6	32	XBHZZ		09004 2411	INDUCTOR, POWER	EA	1
6	33	XBHZZ		56996 B4025690-1	WASHER, INSULATING	EA	2
6	34	PAHZZ	5961-00-483-4579	81349 JAN1N5416	SEMICONDUCTOR DEVIC	EA	4
6	35	XBHZZ	5940-01-085-0634	17117 2396-14-1	TERMINAL, STUD	EA	7
6	36	XBHZZ		56996 B4025691	HEATSINK ASSEMBLY	EA	1
6	37	XBHZZ		09004 2410	TRANSFORMER, POWER	EA	2
6	38	PAHZZ	5305-00-054-6680	96906 MS51957-53	SCREW, MACHINE	EA	2
6	39	PAHZZ	5310-00-880-5978	96906 MS15795-807	WASHER, FLAT	EA	4

(1) ILLUSTRATION (a) FIG NO	(2) (b) ITEM NO	(3) SMR CODE	(4) NATIONAL STOCK NUMBER	(5) FSCM	(6) PART NUMBER	(6) DESCRIPTION USABLE ON CODE	(7) U/M	(8) QTY INC IN UNIT
6	40	XBHZZ		56996	B4025805-29	WASHER, INSULATING	EA	2
6	41	PAHZZ	5310-00-933-8119	96906	MS35338-137	WASHER, LOCK	EA	2
6	42	PAHZZ	5310-00-934-9759	96906	MS35649-284	NUT, PLAIN, HEXAGON	EA	2
6	43	XBHZZ		55285	3223-07FR-07	INSULATOR, XSTR	EA	12
6	44	XBHZZ		56996	B4025722	SHIELD, INSUL, EXSTR	EA	6
6	45	XBHZZ		56996	B4025805-6	WASHER, INSULATING	EA	12
6	46	PAHZZ	5310-01-040-2193	80063	SM-A-768980	WASHER, FLAT	EA	12
6	47	PAHZZ	5305-00-054-6654	96906	MS51957-30	SCREW, MACHINE USED ON Q1, Q4 ONLY	EA	4
6	47	PAHZZ	5305-00-411-0683	96906	MS51957-123	SCREW, MACHINE USED ON Q2, Q3, Q5, Q6 ONLY	EA	8
6	48	XHBZZ		09004	31706	LUG, SOLDER	EA	6
6	49	PAHZZ	5970-01-017-2937	80063	SM-A-752086	INSULATOR, WASHER	EA	14
6	50	PAHZZ	5310-01-015-1287	80063	SM-A-768961	WASHER, FLAT	EA	7
6	51	XBHZZ		56996	B4025829	TERMINAL, SOLDER	EA	7
6	52	PAHZZ		96906	MS15795-910NP	WASHER, FLAT	EA	7
6	53	PAHZZ		96906	MS35649-3255	NUT, HEXAGON	EA	7

,



REF. DES.	ITEM NO.	REF. DES.	ITEM NO.	REF. DES.	ITEM NO.
C1	1	CR5	3	R3	5
C2	1	CR6	3	R4	5
CR1	2	L1	4	R5	6
CR2	2	L2	4	R6	6
CR3	2	R1	5	T1	7
CR4	2	R2	5		

NOTE: FOR COMPLETE REFERENCE DESIGNATION ,
PREFIX WITH A2

EL9AY015

FIGURE 7. PRINTED WIRING BOARD(A2)

(1) ILLUSTRATION (a) (b) FIG ITEM NO NO	(2) SMR CODE	(3) NATIONAL STOCK NUMBER	(4) FSCM	(5) PART NUMBER	(6) DESCRIPTION USABLE ON CODE	(7) U/M	(8) QTY INC IN UNIT
GROUP 06 PRINTED WIRING BOARD							
7	1	PAHZZ 5910-00-113-9817	81349	M39014-02-1345	CAPACITOR, FIXED, CER	EA	2
7	2	PAHZZ 5961-01-156-0109	81349	JAN1N4150-1	SEMICONDUCTOR DEVIC	EA	4
7	3	PAHZZ 5961-00-433-7220	81349	JAN1N5417	SEMICONDUCTOR DEVIC	EA	2
7	4	XBHZZ	56996	B4025707	INDUCTOR ASSEMBLY	EA	2
7	5	PAHZZ 5905-00-455-4403	81349	RCR07G2R7JS	RESISTOR, FIXED, COMP	EA	4
7	6	PHAZZ 5905-00-113-7346	81349	RCR32G470JS	RESISTOR, FIXED, COMP	EA	2
7	7	XBHZZ	09004	2494	TRANSFORMER, CURRENT	EA	1
7	8	PAHZZ 5975-00-727-5153	96906	MS3367-4-9	STRAP, TIEDOWN, ELECT	EA	2
7	9	XBHZZ	56996	B4025712	BRACKET, ANGLE, ASSY	EA	2
7	10	PAHZZ 5310-00-782-1349	96906	MS15795-804	WASHER, FLAT	EA	2
7	11	PAHZZ 5305-00-054-5647	96906	MS51957-13	SCREW, MACHINE	EA	2
7	13	XBHZZ	96987	C-4	CRADLE, MOUNTING	EA	1
7	13	PAHZZ 5310-00-631-1294	80205	NAS671-6	NUT, PLAIN, HEXAGON	EA	2
7	14	PAHZZ 5310-00-929-6395	96906	MS35338-136	WASHER, LOCK	EA	2
7	15	PHAZZ 5310-00-880-5976	96906	MS15795-806	WASHER, FLAT	EA	4
7	16	PHAZZ 5305-00-054-6652	96906	MS51957-28	SCREW, MACHINE	EA	2
7	17	PAHZZ 5975-00-451-5001	96906	MS3367-3-9	STRAP, TIEDOWN, ELECT	EA	1

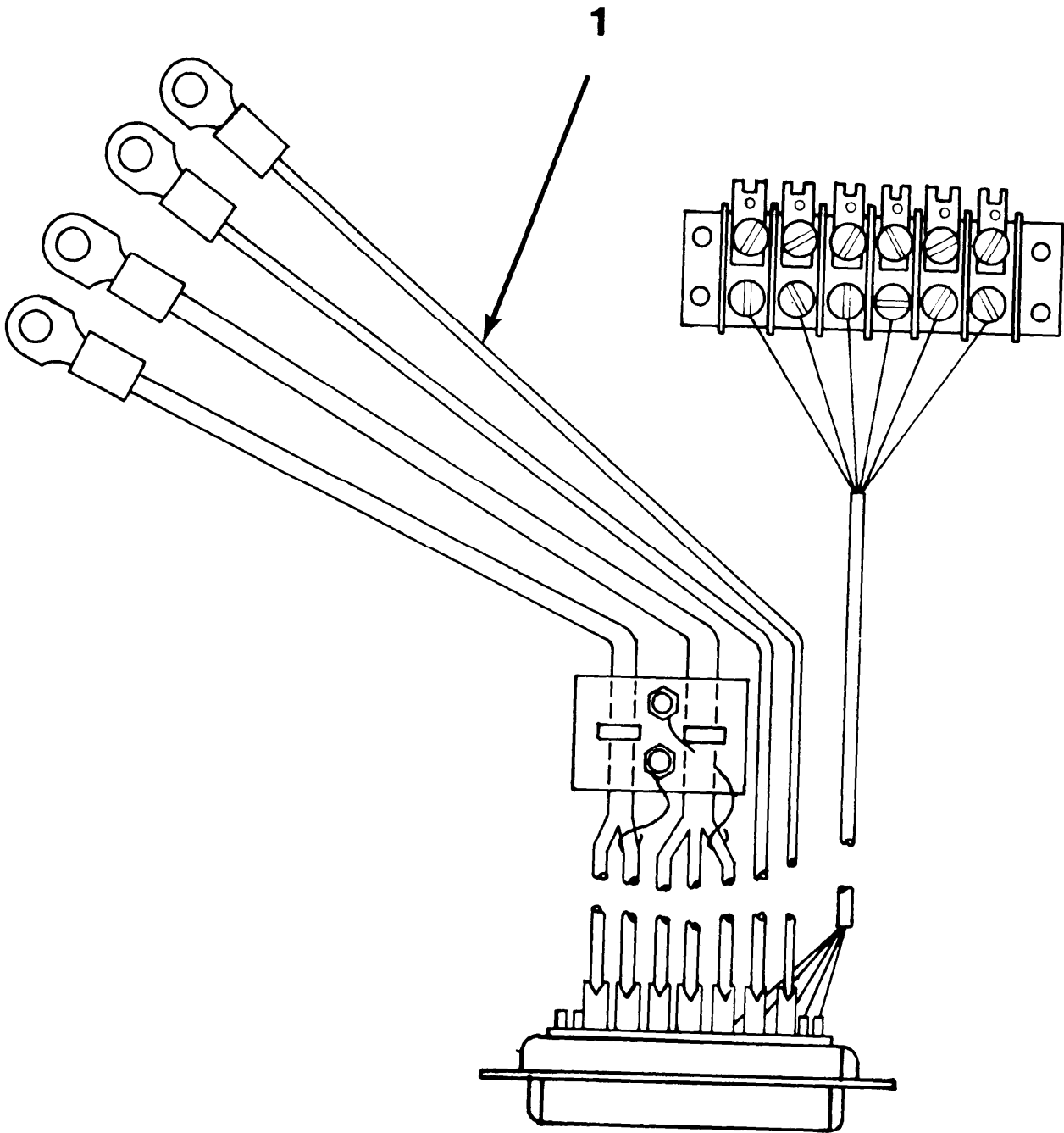


Figure 8. Special Tool.

EL9AY016

(1)	(2)	(3)	(4)	(5)	(6)	(7)	(8)	
ILLUSTRATION					DESCRIPTION		QTY	
(a)	(b)		NATIONAL				INC	
FIG	ITEM	SMR	STOCK	PART			IN	
NO	NO	CODE	NUMBER	FSCM	NUMBER	USABLE ON CODE	U/M	UNIT
GROUP 31 SPECIAL TOOLS								
8	1	PEHZZ		09004	32384	TEST CABLE BOI: 1 AUTH PER COMPANY	EA	1

NATIONAL STOCK NUMBER AND PART NUMBER INDEX

STOCK NUMBER	FIGURE NO.	ITEM NO.	STOCK NUMBER	FIGURE NO.	ITEM NO.
5905-00-004-6080	3	47	5905-00-594-2643	3	33
5910-00-010-8718	2	24	5310-00-595-6211	1	20
5910-00-010-8718	3	2	5310-00-595-6211	3	63
5910-00-010-8721	5	3	5310-00-595-6211	5	16
5310-00-045-5206	1	14	5310-00-595-6761	1	5
5310-00-045-5206	2	3	5961-00-600-0311	6	9
5310-00-045-5207	2	37	5961-00-628-5928	3	12
5305-00-054-5636	1	7	5310-00-631-1294	1	42
5305-00-054-5647	7	11	5310-00-631-1294	7	13
5305-00-054-5648	1	10	5935-00-702-4199	4	7
5305-00-054-5648	2	29	5310-00-722-5998	1	9
5305-00-054-5648	4	25	5310-00-722-5998	5	9
5305-00-054-5648	5	18	5975-00-727-5153	7	8
5305-00-054-5648	6	3	5340-00-761-1258	4	1
5305-00-054-5649	1	25	5310-00-782-1349	1	11
5305-00-054-5650	1	19	5310-00-782-1349	2	27
5305-00-054-5650	3	64	5310-00-782-1349	4	23
5305-00-054-5652	3	68	5310-00-782-1349	6	4
5305-00-054-6650	2	25	5310-00-782-1349	7	10
5305-00-054-6651	4	6	5310-00-810-7785	1	23
5305-00-054-6652	1	8	5310-00-810-7785	3	59
5305-00-054-6652	2	20	5310-00-810-7785	6	7
5305-00-054-6652	7	16	6210-00-813-8265	4	10
5305-00-054-6653	2	31	5961-00-833-3042	2	10
5305-00-054-6653	6	19	5910-00-868-6219	3	4
5305-00-054-6654	6	47	5910-00-868-6219	6	12
5305-00-054-6680	6	38	5310-00-880-5976	2	19
5910-00-101-2381	3	9	5310-00-880-5976	4	4
5905-00-113-4859	6	22	5310-00-880-5976	6	18
5910-00-113-5286	3	3	5310-00-880-5976	7	15
5910-00-113-5465	3	7	5310-00-880-5978	6	39
5910-00-113-5499	3	8	5935-00-913-1823	3	16
5910-00-113-5499	6	2	5930-00-913-2983	4	18
5905-00-113-7346	7	6	5930-00-913-2983	6	15
5910-00-113-9817	3	5	5905-00-914-9236	3	22
5910-00-113-9817	7	1	5961-00-925-3777	3	17
5961-00-139-1931	3	15	5961-00-925-3777	3	18
5940-00-143-4775	2	5	5905-00-926-8706	4	15
5905-00-150-5256	3	36	5310-00-928-2690	1	6
6240-00-155-7836	4	11	5310-00-929-6395	1	34
5310-00-176-6341	2	33	5310-00-929-6395	2	26
5905-00-196-7213	3	21	5310-00-929-6395	4	5
5905-00-240-2747	3	44	5310-00-929-6395	5	8
5905-00-240-2748	3	34	5310-00-929-6395	6	17
5905-00-240-7954	3	32	5310-00-929-6395	7	14
5905-00-240-7955	3	43	5935-00-931-1967	4	8
5905-00-240-7979	3	25	5310-00-933-8118	1	24
5905-00-240-7979	6	14	5310-00-933-8118	2	28
5905-00-240-7982	3	31	5310-00-933-8118	3	60
5910-00-254-2844	3	1	5310-00-933-8118	4	24
5905-00-279-6497	3	49	5310-00-933-8118	5	17
5905-00-307-3501	3	46	5310-00-933-8118	6	6
5305-00-400-8531	6	11	5310-00-933-8119	6	41
5905-00-401-8678	3	19	5310-00-934-9748	6	10
5935-00-402-3830	3	14	5310-00-934-9759	6	42
5330-00-402-5897	3	62	5310-00-934-9761	2	30
5905-00-409-3415	3	28	5310-00-934-9761	4	21
5305-00-411-0683	1	33	5310-00-934-9761	5	7
5305-00-411-0683	2	34	5310-00-934-9761	6	16
5305-00-411-0683	4	22	5310-00-937-0294	3	66
5305-00-411-0683	5	10	5305-00-957-2383	6	20
5305-00-411-0683	6	47	5935-00-980-3276	5	6
5905-00-413-1029	3	38	6210-00-990-4637	4	12
5940-00-427-1946	2	8	5961-01-003-4560	6	13
5940-00-427-1946	6	5	5315-01-015-1218	1	16
5905-00-431-5225	3	35	5310-01-015-1287	6	50
5935-00-432-6519	5	1	5970-01-017-2937	2	11
5961-00-433-7220	7	3	5970-01-017-2937	5	13
5905-00-438-0505	3	24	5970-01-017-2937	6	49
5905-00-450-2827	3	45	5961-01-018-2540	3	54
5975-00-451-5001	7	17	5310-01-040-2193	6	46
5905-00-455-4403	7	5	5340-01-043-7886	4	2
5905-00-458-9267	3	26	5905-01-047-1529	3	20
5999-00-476-6202	3	58	5905-01-047-1530	3	37
5961-00-483-4579	3	11	5305-01-049-1734	1	30
5961-00-483-4579	6	34	5905-01-050-4106	3	48
5905-00-484-7566	3	29	5905-01-064-8328	3	50
5905-00-486-6763	4	17	5962-01-077-5072	3	51
5905-00-491-2638	3	27	5940-01-085-0634	2	7
5905-00-563-1595	3	30	5940-01-085-0634	6	35

NATIONAL STOCK NUMBER AND PART NUMBER INDEX

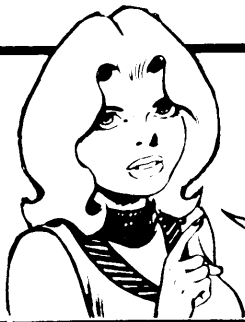
STOCK NUMBER	FIGURE NO.	ITEM NO.	STOCK NUMBER	FIGURE NO.	ITEM NO.
5962-01-088-3862	3	52	5905-01-138-6261	3	39
5305-01-091-1209	1	41	5905-01-139-5314	3	23
5305-01-091-1209	2	23	5905-01-146-4350	3	42
5961-01-104-2287	6	8	5305-01-148-4476	1	2
5962-01-113-0832	3	53	5905-01-148-6092	3	41
5945-01-120-8775	3	13	5905-01-149-1143	3	40
5961-01-124-9684	3	56	5961-01-156-0109	3	10
5961-01-124-9687	3	57	5961-01-156-0109	7	2

FSCM	PART NUMBER	FIGURE NO.	ITEM NO.	FSCM	PART NUMBER	FIGURE NO.	ITEM NO.
56996	B4025671	1	3	81349	JAN2N5672	6	9
56996	B4025672	1	37	81349	JAN2N6032	6	8
56996	B4025673	1	28	81349	JAN4N22	3	54
56996	B4025674	1	36	46384	KFS2-632	3	66
56996	B4025675	1	26	81349	LC12RN2	4	12
56996	B4025676	1	21	81349	LH73/1	4	10
56996	B4025677	1	1	96906	MS15795-802	1	5
56996	B4025680	4	16	96906	MS15795-803	1	20
56996	B4025683	1	4	96906	MS15795-803	3	63
56996	B4025685	5	5	96906	MS15795-803	5	16
56966	B4025688	2	32	96906	MS15795-804	1	11
56996	B4025690-1	6	33	96906	MS15795-804	2	27
56996	B4025691	6	36	96906	MS15795-804	4	23
56996	B4025695	2	17	96906	MS15795-804	6	4
56996	B4025695	6	23	96906	MS15795-804	7	10
56996	B4025699	3	65	96906	MS15795-805	1	9
56996	B4025707	7	4	96906	MS15795-805	5	9
56996	B4025709-1	1	15	96906	MS15795-806	2	19
56996	B4025709-2	1	17	96906	MS15795-806	4	4
56996	B4025710	6	27	96906	MS15795-806	6	18
56996	B4025712	4	19	96906	MS15795-806	7	15
56996	B4025712	5	4	96906	MS15795-807	6	39
56996	B4025712	7	9	96906	MS15795-907	1	14
56996	B4025713	1	31	96906	MS15795-907	2	3
56996	B4025714	2	1	96906	MS15795-908	2	37
56996	B4025716	1	39	96906	MS15795-908NP	6	26
56996	B4025721	1	32	96906	MS15795-910NP	2	12
56996	B4025722	6	44	96906	MS15795-910NP	5	14
56996	B4025757	4	9	96906	MS15795-910NP	6	52
56996	B4025805-10	5	12	96906	MS17830-06C	2	33
56996	B4025805-25	3	61	96906	MS24693-26	1	41
56996	B4025805-29	6	40	96906	MS24693-26	2	23
56996	B4025805-6	6	45	96906	MS24693-27	1	29
56996	B4025829	2	9	96906	MS24693-272	4	14
56996	B4025829	5	11	96906	MS24693-4	1	2
56996	B4025829	6	51	96906	MS24693-50	2	21
70318	B4025863-1	1	18	96906	MS24693-6	1	30
70318	B4025863-1	2	2	96906	MS24693S3	6	20
70318	B4025863-2	1	12	96906	MS25036-156	2	5
70318	B4025863-3	2	38	96906	MS25237-327	4	11
70318	B4025863-3	6	24	96906	MS3181-12N	3	16
56996	B4025864	2	14	96906	MS3367-3-9	7	17
56996	B4025876	1	38	96906	MS3367-4-9	7	8
56996	B4025877	1	27	96906	MS35338-134	1	6
56996	B4025878	1	35	96906	MS35338-135	1	24
96987	C-4	2	22	96906	MS35338-135	2	28
96987	C-4	6	30	96906	MS35338-135	3	60
96987	C-4	7	12	96906	MS35338-135	4	24
81349	CK06BX474K	3	7	96906	MS35338-135	5	17
03508	C147A	6	13	96906	MS35338-135	6	6
71468	DDMM-24W7P	5	1	96906	MS35338-136	1	34
71468	DD21961	5	6	96906	MS35338-136	2	26
04013	DFU-2Y	6	31	96906	MS35338-136	4	5
95987	G-15	2	16	96906	MS35338-136	5	8
95987	G-15	6	29	96906	MS35338-136	6	17
81349	JAN-2N2907A	3	18	96906	MS35338-136	7	14
81349	JAN1N1186	2	10	96906	MS35338-137	6	41
81349	JAN1N4150-1	3	10	96906	MS35649-244	6	10
81349	JAN1N4150-1	7	2	96906	MS35649-264	2	30
81349	JAN1N5416	3	11	96906	MS35649-264	4	21
81349	JAN1N5416	6	34	96906	MS35649-264	5	7
81349	JAN1N5417	7	3	96906	MS35649-264	6	16
81349	JAN1N645-1	3	12	96906	MS35649-284	6	42
81349	JAN1N751A-1	3	57	96906	MS35649-3255	6	53
81349	JAN1N756A-1	3	56	96906	MS35650-3255NP	2	13
81349	JAN2N2907A	3	17	96906	MS35650-3255NP	5	15
81349	JAN2N3740	3	15	96906	MS39087-6	4	1

NATIONAL STOCK NUMBER AND PART NUMBER INDEX

FSCM	PART NUMBER	FIGURE NO.	ITEM NO.	FSCM	PART NUMBER	FIGURE NO.	ITEM NO.
96906	MS51957-121	6	11	81349	RLR07C1501GS	3	41
96906	MS51957-123	1	33	81349	RLR07C1502GR	3	32
96906	MS51957-123	2	34	81349	RLR07C22ROGR	3	43
96906	MS51957-123	4	22	81349	RLR07C2200GR	3	26
96906	MS51957-123	5	10	81349	RLR07C2201GR	3	37
96906	MS51957-123	6	47	81349	RLR07C2701GR	3	27
96906	MS51957-13	7	11	81349	RLR07C3300GR	3	45
96906	MS51957-14	1	10	81349	RLR07C3301GS	3	39
96906	MS51957-14	2	29	81349	RLR07C3900GR	3	38
96906	MS51957-14	4	25	81349	RLR07C3901GR	3	44
96906	MS51957-14	5	18	81349	RLR07C3902GR	3	36
96906	MS51957-14	6	3	81349	RLR07C4700GR	3	25
96906	MS51957-15	1	25	81349	RLR07C4700GR	6	14
96906	MS51957-16	1	19	81349	RLR07C4701GR	3	24
96906	MS51957-16	3	64	81349	RLR07C4702GR	3	30
96906	MS51957-18	3	68	81349	RLR07C5601GS	3	40
96906	MS51957-2	1	7	81349	RLR07C5602GR	3	34
96906	MS51957-26	2	25	81349	RLR07C6800GR	3	31
96906	MS51957-27	4	6	81349	RLR20C10ROGR	3	29
96906	MS51957-28	1	8	81349	RLR20C1000GR	4	15
96906	MS51957-28	2	20	81349	RLR20C1800GR	3	22
96906	MS51957-28	7	16	81349	RLR20C3901GR	3	19
96906	MS51957-29	2	31	81349	RLR20C6800GR	3	21
96906	MS51957-29	6	19	08530	RM-967	3	62
96906	MS51957-30	6	47	81349	RNC60H1270FS	3	47
96906	MS51957-53	6	38	81349	RNC60H1871BS	3	46
96906	MS90311-231	4	18	81349	RNC60H3011BS	3	49
96906	MS90311-231	6	15	81349	RV6TAYSA102A	4	17
81349	M21097/14-01	3	14	81349	RWR89S1ROOFR	3	35
81349	M38510/11005BCB	3	53	81349	RWR89S1000FR	3	28
81349	M38510/11201BCB	3	52	01281	SD5154	5	2
81349	M38527/1-01	3	67	01281	SD5154	6	1
81349	M39003/01-2268	3	4	34333	SG1524J883B	3	51
81349	M39003/01-2268	6	12	80063	SM-A-752086	2	11
81349	M39014-02-1338	2	24	80063	SM-A-752086	5	13
81349	M39014-02-1338	3	2	80063	SM-A-752086	6	49
81349	M39014-02-1345	3	5	80063	SM-A-768961	6	50
81349	M39014-02-1345	7	1	80063	SM-A-768980	6	46
81349	M39014-02-1350	3	8	80063	SM-B-743416	1	16
81349	M39014-02-1350	6	2	01295	TL431MJG/883B	3	55
81349	M39014/01-1317	3	6	82877	011-064	4	20
81349	M39014/02-1326	3	9	78189	1108-01	1	13
81349	M39014/02-1356	3	3	78189	1108-01	2	4
81349	M39014/02-1419	5	3	78189	1110-04	2	36
81349	M39016/11-017P	3	13	78189	1110-04	6	25
81349	M39018/01-0623	3	1	06540	16023-B-25D	4	2
81349	M39018/06-0022	6	28	09004	19938-5	2	35
81349	M39018/06-0141	2	6	17117	2396-14-1	2	7
81349	M39024/10-02	4	7	17117	2396-14-1	6	35
81349	M39024/10-09	4	8	09004	2410	6	37
80205	NAS1397R5N	1	22	09004	2411	6	32
80205	NAS671-4	1	23	09004	2412	2	18
80205	NAS671-4	3	59	09004	2494	7	7
80205	NAS671-4	6	7	17117	3041-14-1	4	3
80205	NAS671-6	1	42	09004	31706	6	48
80205	NAS671-6	7	13	55285	3223-07FR-07	6	43
81349	RCR07G2R7JS	7	5	09004	32384	8	1
81349	RCR20G3R9KS	6	22	5699B	4025839	1	40
81349	RCR32G470JS	7	6	79963	440-6	2	8
81349	RJR24FW102P	3	33	79963	440-6	6	5
81349	RLR07C1001GR	3	20	08289	503-026NY	3	58
81349	RLR07C1002GS	3	23	17117	5629-14-1	2	15
81349	RLR07C1003GR	3	50	94222	58-27-310-24	4	13
81349	RLR07C1004GR	3	48	77569	9151	6	21
81349	RLR07C1500GS	3	42				

RECOMMENDED CHANGES TO EQUIPMENT TECHNICAL PUBLICATIONS



THEN... JOT DOWN THE DOPE ABOUT IT ON THIS FORM. CAREFULLY TEAR IT OUT. FOLD IT AND DROP IT IN THE MAIL!

SOMETHING WRONG WITH THIS PUBLICATION?

FROM (PRINT YOUR UNIT'S COMPLETE ADDRESS)
 Commander
 Stateside Army Depot
 ATTN: AMSTA-US
 Stateside, N.J. 07703

DATE SENT
 10 July 1975

PUBLICATION NUMBER

TM 11-5840-340-20P

PUBLICATION DATE

23 Jan 78

PUBLICATION TITLE

Radar Set AN/PRC-76

BE EXACT PIN-POINT WHERE IT IS

PAGE NO	PARA-GRAPH	FIGURE NO	TABLE NO
33			
44		19	
45			

IN THIS SPACE TELL WHAT IS WRONG AND WHAT SHOULD BE DONE ABOUT IT:

For item 2, change the NSN to read: 5835-00-134-9186.
Reason: Accuracy.

Identify the cover on the junction box (item no. 5).
Reason: It is a separate item and is not called out on figure 19.

Add the cover of the junction box as an item in the listing for figure 19.
Reason: Same as above

SAMPLE

PRINTED NAME GRADE OR TITLE AND TELEPHONE NUMBER
 SSG I. M. DeSpirit of 999-1776

SIGN HERE

TEAR ALONG PERFORATED LINE

FILL IN YOUR
UNIT'S ADDRESS

FOLD BACK

DEPARTMENT OF THE ARMY

POSTAGE AND FEES PAID
DEPARTMENT OF THE ARMY
DOD 314



OFFICIAL BUSINESS
PENALTY FOR PRIVATE USE \$300

SAMPLE

Commander
US Army Communications-Electronics Command
and Fort Monmouth
ATTN: DRSEL-ME-MP
Fort Monmouth, New Jersey 07703

TEAR ALONG PERFORATED LINE

RECOMMENDED CHANGES TO EQUIPMENT TECHNICAL PUBLICATIONS



THEN...JOT DOWN THE DOPE ABOUT IT ON THIS FORM. CAREFULLY TEAR IT OUT, FOLD IT AND DROP IT IN THE MAIL.

SOMETHING WRONG WITH THIS PUBLICATION?

FROM: (PRINT YOUR UNIT'S COMPLETE ADDRESS)

DATE SENT

PUBLICATION NUMBER

TM 11-6130-429-40P

PUBLICATION DATE

2 July 1984

PUBLICATION TITLE

Converter, Direct Current CV-3734/T

BE EXACT PIN-POINT WHERE IT IS

PAGE NO.

PARA-GRAPH

FIGURE NO.

TABLE NO.

IN THIS SPACE TELL WHAT IS WRONG AND WHAT SHOULD BE DONE ABOUT IT:

TEAR ALONG PERFORATED LINE

PRINTED NAME GRADE OR TITLE AND TELEPHONE NUMBER

SIGN HERE

DA FORM 2028-2
1 JUL 79

PREVIOUS EDITIONS ARE OBSOLETE

P.S.--IF YOUR OUTFIT WANTS TO KNOW ABOUT YOUR RECOMMENDATION MAKE A CARBON COPY OF THIS AND GIVE IT TO YOUR HEADQUARTERS.

FILL IN YOUR
UNIT'S ADDRESS

FOLD BACK

DEPARTMENT OF THE ARMY

OFFICIAL BUSINESS
PENALTY FOR PRIVATE USE \$300

POSTAGE AND FEES PAID
DEPARTMENT OF THE ARMY
DOD 314



TEAR ALONG PERFORATED LINE

Commander
US Army Communications-Electronics Command
and Fort Monmouth
ATTN: DRSEL-ME-MP
Fort Monmouth, New Jersey 07703

FILL IN YOUR
UNIT'S ADDRESS



FOLD BACK

DEPARTMENT OF THE ARMY

OFFICIAL BUSINESS
PENALTY FOR PRIVATE USE \$300

POSTAGE AND FEES PAID
DEPARTMENT OF THE ARMY
DOD 314



TEAR ALONG PERFORATED LINE

Commander
US Army Communications-Electronics Command
and Fort Monmouth
ATTN: DRSEL-ME-MP
Fort Monmouth, New Jersey 07703

RECOMMENDED CHANGES TO EQUIPMENT TECHNICAL PUBLICATIONS



THEN...JOT DOWN THE DOPE ABOUT IT ON THIS FORM. CAREFULLY TEAR IT OUT, FOLD IT AND DROP IT IN THE MAIL.

SOMETHING WRONG WITH THIS PUBLICATION?

FROM: (PRINT YOUR UNIT'S COMPLETE ADDRESS)

DATE SENT

PUBLICATION NUMBER
TM 11-6130-429-40P

PUBLICATION DATE
2 July 1984

PUBLICATION TITLE Converter, Direct
Current CV-3734/T

BE EXACT PIN-POINT WHERE IT IS

PAGE NO.	PARA-GRAPH	FIGURE NO.	TABLE NO.
----------	------------	------------	-----------

IN THIS SPACE TELL WHAT IS WRONG AND WHAT SHOULD BE DONE ABOUT IT:

TEAR ALONG PERFORATED LINE

PRINTED NAME GRADE OR TITLE AND TELEPHONE NUMBER

SIGN HERE

FILL IN YOUR
UNIT'S ADDRESS

FOLD BACK

DEPARTMENT OF THE ARMY

OFFICIAL BUSINESS
PENALTY FOR PRIVATE USE \$300

POSTAGE AND FEES PAID
DEPARTMENT OF THE ARMY
DOD 314



TEAR ALONG PERFORATED LINE

Commander
US Army Communications-Electronics Command
and Fort Monmouth
ATTN: DRSEL-ME-MP
Fort Monmouth, New Jersey 07703

By Order of the Secretary of the Army:

Official:

JOHN A. WICKHAM JR.
General, United States Army
Chief of Staff

ROBERT M. JOYCE
Major General, United States Army
The Adjutant General

DISTRIBUTION:

To be distributed in accordance with DA Form 12-51A-1 requirements
for AN/TTC-39.

☆U.S. GOVERNMENT PRINTING OFFICE: 1984-705-046/4123

